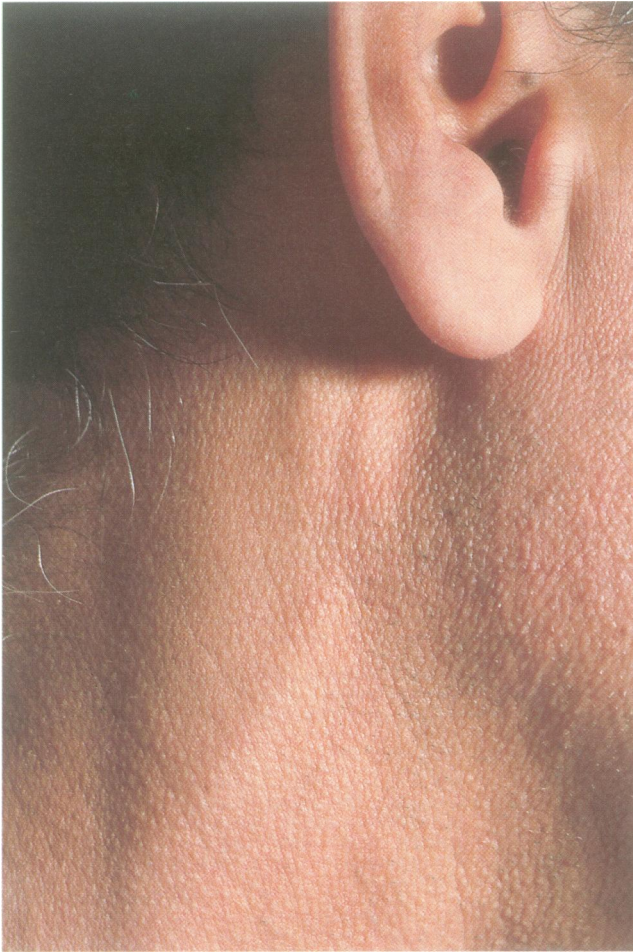
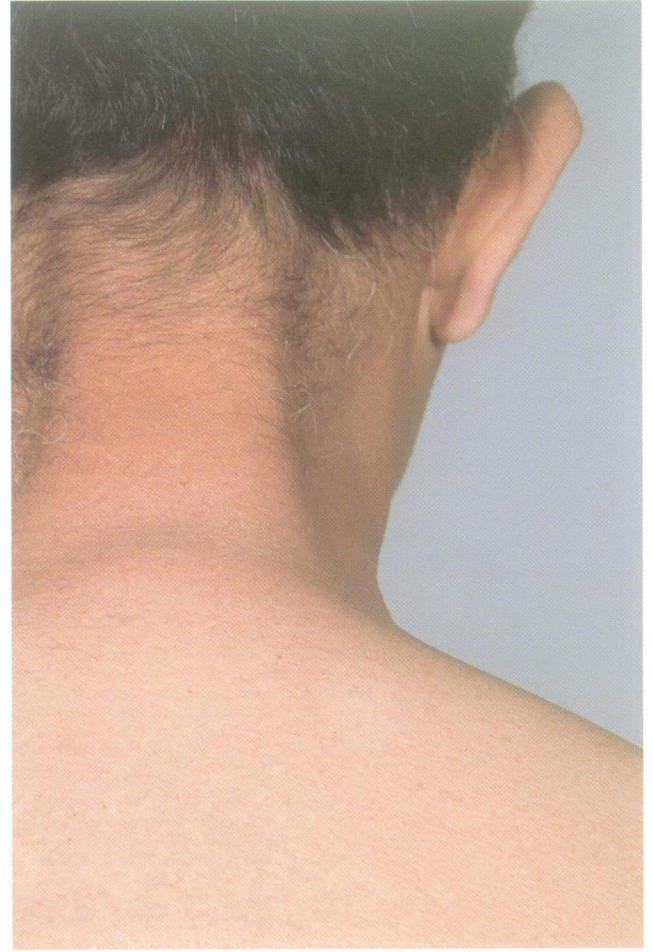


NEUROLOGICAL PICTURE

Leprosy

*Figure 1**Figure 2*

Leprosy is encountered rarely in routine neurological practice in the United Kingdom. I have seen two cases during 18 years. Nerve thickening is seen with both lepromatous and tuberculoid forms of the disease. Superficial nerves susceptible to thickening—and therefore usually palpable—include the radial and ulnar cutaneous nerves at the wrist, the medial cutaneous nerve of the forearm, the superficial peroneal, the sural nerve, and the greater auricular nerve (figure 1). Areas of skin depigmentation may be quite subtle (figure 2).

G D PERKIN
Regional Neurosciences Centre,
Charing Cross Hospital,
Fulham Palace Road,
London W6 8RF, UK