
ELIXIR GABAIL

*The Ideal Sedative in
all Nervous Affections*

ELIXIR GABAIL combines the sedative action of Bromide and Chloral Hydrate with the nervine and anti-spasmodic deodorised Valerianate.

Pharmaceutically it is as pleasant and palatable as it is efficacious from the therapeutic standpoint, the disagreeable odour and flavour of the Valerian having been completely removed without in any way impairing its medicinal value.

In "war" neuroses ELIXIR GABAIL allays anxieties, doubts and fears, and relieves mental stress engendered through heightened tension and increased nervous strain.

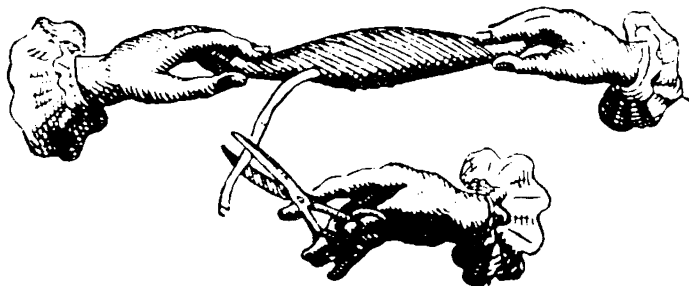
DOSAGE : One tablespoonful in water twice or thrice daily.

As a hypnotic : Two tablespoonfuls at bedtime.

Supplied in bottles of 187 c.c., 16 oz., and in bulk for Hospital use.

Literature and sample on request.

THE ANGLO-FRENCH DRUG CO. LTD.
11-12 GUILFORD STREET :: LONDON, W.C.1



Here is the simplest form of what physiologists call a "nerve-muscle preparation." It is merely a living muscle dissected away from the body, but with its nerve still attached. In the experiment the two tendons of the muscle are held by the two hands. An assistant pinches the nerve with forceps. The muscle thereon contracts and draws the two hands together.

From Charles Singer, "A short history of medicine" (Clarendon Press, Oxford).

A 17th Century Pioneer

By virtue of his classic experiments on "nerve-muscle preparation," Jan Jacobz Swammerdam (1637-1680) founded the science of neuro-physiology. Great strides have since been made, as a result, in neurological practice generally.

To-day, electro-surgical apparatus represents a noteworthy advance in technique as applied to surgery of the nervous system. Here the Marconi Therator Minor, type MME.3, provides a delicate cutting action, entirely free from charring and without the slightest trace of faradism. It is thus particularly suitable for operations on or near the nerves. It may be said, in fact, that the performance of this Diathermy opens up new vistas in the field of neurological surgery. Further particulars on request.

MARCONI INSTRUMENTS LIMITED

Electro-Medical Apparatus

ST. ALBANS, HERTS



Tele.: ST. ALBANS 4323/6

Northern Office: 30 ALBION STREET, HULL · Telephone: HULL 16144

BOOKS OF OUTSTANDING MERIT

TEXTBOOK OF MEDICAL TREATMENT

Edited by

D. M. DUNLOP, B.A.(Oxon), M.D., F.R.C.P.(Edin.), M.R.C.P.(Lond.)
L. S. P. DAVIDSON, B.A.(Camb.), M.D., F.R.C.P.(Edin.), F.R.C.P.(Lond.)
 and **J. W. McNEE, D.S.O., D.Sc., M.D.(Glas.), F.R.C.P.(Edin.), F.R.C.P.(Lond.)**
 Royal Medium 8vo. 944 pages, illustrated. 30s. net, postage 8d. (January, 1946)
 ¶ "There can be little doubt that this book will continue to have the success it deserves."

British Medical Journal

PSYCHOLOGICAL MEDICINE

WITH AN APPENDIX—PSYCHIATRY ASSOCIATED WITH WAR CONDITIONS

By **DESMOND CURRAN, M.B., F.R.C.P., D.P.M.**
 and **ERIC GUTTMANN, M.D., M.R.C.P.**

Second Edition. Demy 8vo. 190 pages. 20 illustrations. 10s. 6d. net, postage 5d. (October, 1945)
 ¶ "This book has an unusual distinction. It is written by men of widely different schools; it can be described as a sound filtrate of modern psychiatric knowledge, and as such can be warmly recommended to the profession."—*British Medical Journal*

DISEASES OF THE NERVOUS SYSTEM

By **F. M. R. WALSHE, O.B.E., M.D., D.Sc., F.R.C.P.**

Fourth Edition. Reprint. Demy 8vo. 376 pages. 51 illustrations. 15s. net, postage 8d. (Jan., 1946)
 "Without doubt the best book on the subject to-day."—*The Medical Press and Circular*

THE NATURAL DEVELOPMENT OF THE CHILD

By **AGATHA H. BOWLEY, Ph.D.**

Psychologist, School Psychological Service, Leicester

Second Edition. Crown 8vo. 224 pages, including 33 art plates, with 84 photographic illustrations
 8s. 6d. net, postage 6d. (Reprinted 1945)

¶ "A brief account of the normal growth and development of children from babyhood to adolescence
 ¶ "This book is excellent both in conception and achievement. It is a well-packed presentation of the findings of a vast amount of psychological research."—*The Medical Officer*

ACUTE INJURIES OF THE HEAD

By **G. F. ROWBOTHAM, B.Sc.(Manch.), F.R.C.S. (Eng.)**

Second Edition. Royal Medium 8vo. 440 pages. 201 illustrations, 12 in full colour
 30s. net, postage 8d. (Reprinted 1945)

¶ "A well-printed and well-illustrated book which will act as a guide and stimulus to all who deal with the immediate and remote effect of head injury."—*British Medical Journal*

An Introduction to

PHYSICAL METHODS OF TREATMENT IN PSYCHIATRY

By **WILLIAM SARGANT, M.A., M.B.(Cantab.), F.R.C.P., D.P.M.**
 and **ELIOT SLATER, M.A., M.D.(Cantab.), F.R.C.P., D.P.M.**

Demy 8vo. 184 pages. Price 8s. 6d. net, postage 5d. (Reprint ready Summer, 1946)

¶ This book gives full particulars of the new techniques in treatment by two specialists of the Maudsley Hospital, London

¶ "A well-written book. The authors have made an excellent presentation of their case."—*British Medical Journal*

Published by

E. & S. LIVINGSTONE LTD., 16-17 TEVIOT PLACE,
 EDINBURGH

For Epilepsy

'EPTOIN'

Brand

Soluble Phenytoin

A preparation of soluble phenytoin supplied as a sugar-coated tablet for the treatment of epilepsy.

Eptoin Tablets are free from the narcotic effects usually associated with bromides and barbiturates, and greatly decrease the number of convulsive seizures in cases which have not responded satisfactorily to other forms of treatment.

If a patient has already been treated with barbiturates or bromides, these drugs should be withdrawn slowly as their sudden cessation before a reservoir of soluble phenytoin has been built up may precipitate attacks.

The average daily dose is one 0.1 gm. ($1\frac{1}{2}$ grains) Eptoin Tablet during or just after meals three times a day.

*Supplied in tablets containing
0.1 gm. ($1\frac{1}{2}$ grains)*

Bottle of 100 tablets . . . 5/3

Price net.



Further information gladly sent on request to the
MEDICAL DEPARTMENT
BOOTS PURE DRUG COMPANY LIMITED
NOTTINGHAM

SWEAT SECRETION

AS AN AID TO DIAGNOSIS

The mapping of areas of sweat secretion is a technique of established value in the diagnosis of nervous lesions due to trauma or disease. A high degree of precision is afforded by the use of 'Wellcome' brand Quinizarin Compound, a sensitive indicator with marked advantages over starch-iodine powders and other preparations formerly in use.

Applied lightly to the skin, 'Wellcome' brand Quinizarin Compound clearly defines areas of sudomotor activity by a distinctive colour change, which is readily recorded on ordinary photographic materials. The preparation is easily removable after use, and the test can therefore be repeated at short intervals if desired.

'WELLCOME'^{BRAND} QUINIZARIN COMPOUND

A fine powder containing 28 per cent of quinizarin 2 : 6-disulphonic acid.

Bottles of 100 gm. and 250 gm.



BURROUGHS WELLCOME & CO.

(The Wellcome Foundation Ltd.)

LONDON

'RUTONAL'

TRADE MARK

BRAND

methophenobarbitone

in epilepsy

'RUTONAL' brand methophenobarbitone, an anti-epileptic with little hypnotic action, is being used increasingly as the routine barbiturate in those institutions and practices in which epileptics are encouraged to regard themselves as normal members of society.

'RUTONAL' is supplied in containers of 25 x grain 3 tablets, 3s. 3d., less the usual discounts and plus purchase tax ; available from your usual supplier ; also in containers of

100 x grain $\frac{1}{2}$ tablets,

100 x grain 1 tablets.

Our Medical Information Department will be glad to supply you with further details. ILFord 3060, Extensions 99 and 100.



MANUFACTURED BY

MAY & BAKER LTD.

DISTRIBUTORS

PHARMACEUTICAL SPECIALITIES (MAY & BAKER) LTD., DAGENHAM

'SODIUM AMYTAL'

Trade Mark

Brand

SODIUM ISO-AMYL ETHYL BARBITURATE

IN NEUROPSYCHIATRY

The barbiturates in general are central nervous depressants with which almost any degree of depression, from light sedation to deep hypnosis may be obtained through proper selection of drug, dose and route of administration.

With 'SODIUM AMYTAL' it is possible to obtain prompt and prolonged narcosis in psychiatric individuals or produce a controlled hypnosis for psychological study.

Other suggested indications are the

securing of restful sleep, the control of extreme excitement and the control (or prevention) of convulsions during insulin shock treatment.

A dosage scheme for establishing the prognosis in Schizophrenic patients has been reported.

'SODIUM AMYTAL' is issued as 'PULVULES' brand filled capsules in two strengths, one grain and three grains; also in ampoules of 0.125 gm., 0.25 gm., 0.5 gm. and 1 gm. for parenteral use.

ELI LILLY AND COMPANY, LIMITED

BASINGSTOKE

LONDON

A Second Edition of
PHYSIOLOGY OF THE NERVOUS SYSTEM

By J. F. FULTON, M.D., D.Ph., D.Sc.
Sterling Professor of Physiology, Yale University

Contents include: The Receptors—Dorsal Spinal Nerve Roots and the Dermatomes—The Motor Unit—Synapses and Elementary Reflexes—Central Inhibition—The Spinal Cord—The Medulla Oblongata—The Pons and Midbrain—Autonomic Nervous System—The Hypothalamus—The Thalamus—The Cerebral Cortex—The Extrapyramidal Motor System—The Cerebellum—The Nervous System as a Whole—The Conditioned Reflex—Bibliography—Index.

“A landmark in the literature of neurology.”—*British Medical Journal*.

Pp. 624

112 Illustrations

38s. net

Oxford University Press

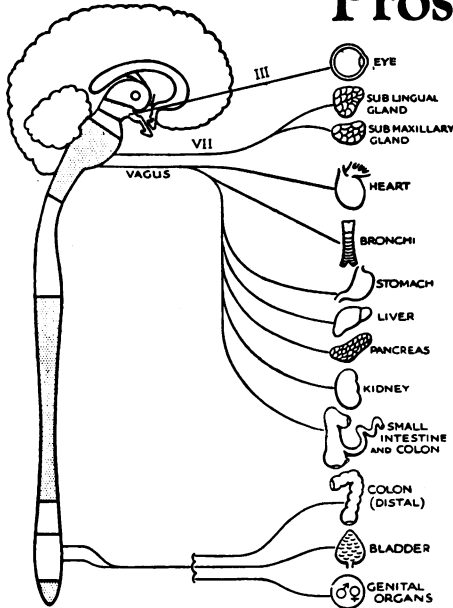


Ediswan Convulsion Therapy Equipment

Applied to the treatment of epilepsy through the use of a specially designed apparatus, this equipment provides a safe and effective method of inducing controlled convulsions.

General Radiological, Ltd., 15-18 Clipstone Street, London, W.1

'Prostigmin' in Nerve Injuries



In a short report published in 1935,¹ 'Prostigmin' in many different neuromuscular disturbances was suggested, encouraging results having been obtained with the drug in bulbar palsy, amyotrophic lateral sclerosis, peripheral neuritis and the following:—

“Two patients with almost complete loss of hand movements resulting from injury to nerves showed quite appreciable increase in voluntary movements.”

War Injuries

More recently² 'Prostigmin' has been tried with very encouraging results in the treatment of war wounds involving severe nerve injuries. The increase of the motor effect was considerable and fatigue was reduced. A small oral dose of 'Prostigmin' was given on alternate days, fifteen minutes before commencing exercises, and was gradually increased to half a 'Prostigmin' tablet (7.5 mg.). The response was favourable in 12 out of 13 cases. The best effects were obtained in the treatment of arm muscles.

References: (1) *Lancet*, i, 575 (March 9th, 1935); (2) *Zbl. Neurochir.*, 1942, No. 1/3.

The Parasympathetic System

'Prostigmin' is used in any condition in which it is desired to stimulate the parasympathetic nervous system or to damp down the effects resulting from over stimulation of the sympathetic. It has therefore an exceedingly wide range of therapeutic usefulness.

'PROSTIGMIN'

PARASYMPATHICOMIMETIC

'Prostigmin' is a 'Roche' trade mark. The preparation to which it is applied is issued in 1 c.c. ampoules, each containing 0.5 mg., in a concentrated injectable solution (2.5 mg. per c.c.) in bottles of 5 c.c. and 15 mg. oral tablets.

ROCHE PRODUCTS LTD., WELWYN GARDEN CITY, ENGLAND

Scottish Depot: 665, Great Western Road, Glasgow, W.2.

Advances in Vitamin B₁ Therapy



'Benerva' 100 mg. Ampoules in boxes of 3 and 12

Manufactured by:—

ROCHE PRODUCTS LTD., WELWYN GARDEN CITY, ENGLAND

Scottish Depot: 665, Great Western Road, Glasgow, W.2.

When large doses of vitamin B₁ (aneurine or thiamin) are urgently required or absorption of oral doses is unsatisfactory, prompt action is ensured by the hypodermic, intramuscular or intravenous administration of 'Benerva' solution.

'BENERVA'

100 mg. AMPOULES

present the maximum dose of vitamin B₁, 32,000 International Units, which can be injected in one dose. One mg. Aneurine Hydrochloride B.P. equals 320 International Units.

A "Sandoz" Product

BELLERGA

THE REGULATOR OF AUTONOMIC FUNCTION

"In the treatment of autonomic dystonia it is necessary to consider the simultaneous influence of an associated sympathetic and vagus excitation.

Rothlin has shown that a combination of Bellafoline and Femergin is well suited as a sedative of the autonomic nervous system, particularly as regards peripheral hypertonicity. The addition of phenobarbitone, a sedative of the central nervous system, to this combination gives the preparation known as Bellergal, which is now established as the remedy of choice in the treatment of autonomic dystonia."

(Schweiz. Med. Wschr., 42, 1003, 1935.)

SANDOZ PRODUCTS, LTD., 134, WIGMORE STREET, LONDON, W.1.

Distributors :

BROOKS & WARBURTON, LTD., 232-240, VAUXHALL BRIDGE ROAD, S.W.1



For Epilepsy



THE widespread use of 'Epanutin' in the treatment of epilepsy during the past few years has provided ample evidence that this anti-convulsant can reduce the frequency of epileptic seizures in a large number of cases. 'Epanutin' is without the hypnotic and narcotizing effects of drugs belonging to the barbituric acid class.

It has been shown, however, that a striking synergism exists between 'Epanutin' and phenobarbitone. The combined use of these two drugs has been found to be more effective in some cases than the use of either drug alone. Cases of epilepsy that do not respond to treatment with phenobarbitone often yield to these two drugs together, and some authorities are of the opinion that the combination should be tried in every new case of epilepsy.

Capsules containing 0.1 gm. ($1\frac{1}{2}$ grains) of 'Epanutin' (Soluble Phenytoin) with 0.05 gm. ($\frac{3}{4}$ grain) of Phenobarbitone are supplied.

'EPANUTIN'

with Phenobarbitone

PARKE, DAVIS & CO., 50 BEAK ST., LONDON, W.1.

Inc. U.S.A., Liability Ltd.

*In bottles
of
100*

ELECTRIC CONVULSION THERAPY

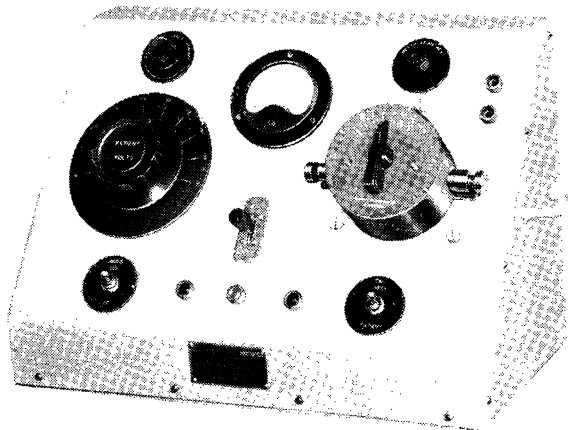
for treatment of Melancholia, Mental and Psychiatric Disorders

(MEDISVAN MODEL)

MEDICAL OBSERVATIONS

Many thousands of cases have been successfully treated by this method, including sufferers from INVOLUTIONARY MELANCHOLIA, CLIMACTERIC DEPRESSION, RECENT MANIA, ACUTE PSYCHOSES AND OTHER PSYCHIATRIC DISORDERS.

MORE THAN 200 IN DAILY USE



A new apparatus has been developed in Sweden, called the "MEDISVAN" (Swedish for "Mental Shock"). It is a simple, portable and is in use in more than 250 hospitals. (See article in "The Journal of Neurology" for details.)

Please write for literature describing this new apparatus.

COX-CAVENDISH ELECTRICAL CO., LTD

Phone 46 47, Marylebone High Street, London W

NATIONAL HOSPITAL

QUEEN SQUARE

For the Relief and Cure of Diseases of the Nervous System including Paralysis and Epilepsy.

LONDON, W.C.1

THIS HOSPITAL is a School of Medicine and has been recognised by the Conjoint Board of England as a place where part of the fifth year may be devoted to clinical work.

THE OUT-PATIENT PRACTICE is open at 10.30 o'clock every day (except Saturday). Clinical Assistants are appointed to the Physicians for Out-patients for six months.

THE IN-PATIENT PRACTICE is open at 10 o'clock.

A limited number of **CLINICAL CLERKS** will be appointed. Fees: three months, 12gns.; and six months, 20gns.

A fee of **£2 2s.** for three months, or **£1 1s.** for one month, is charged for attending the Out-patient Department only.

Clinical Demonstrations are given on Saturday mornings during term.

Application should be made to the Dean of the Medical School.

Treasurer: The Right Hon. Lord McGowan.

J. PURDON MARTIN,

Acting Dean of the Medical School.

● Clinical instruction at the

WEST END HOSPITAL

for

NERVOUS DISEASES

Welbeck Street, W.1, and Gloucester Gate, Regent's Park, N.W.1

Intensive courses in Neurology with facilities for examination of cases are held before each M.R.C.P. examination. Fee £2-12-6 (£2-2-0 to Members of The Fellowship of Medicine).

Courses will also be held in Neuro-Surgery suitable for final F.R.C.S. candidates and in Clinical Psychiatry for M.R.C.P. candidates and General Practitioners.

● For further particulars of the above and post graduate facilities, apply to the Secretary.

ST. ANDREW'S HOSPITAL

FOR NERVOUS AND MENTAL DISORDERS

NORTHAMPTON

PRESIDENT—THE MOST HON. THE MARQUESS OF EXETER, K.G., C.M.G., A.D.C.
Medical Superintendent: THOMAS TENNENT, M.D., F.R.C.P., D.P.H., D.P.M.

THIS Registered Hospital is situated in 180 acres of park and pleasure grounds. Voluntary patients, who are suffering from incipient mental disorders or who wish to prevent recurrent attacks of mental trouble; temporary patients, and certified patients of both sexes are received for treatment. Careful clinical, bio-chemical, bacteriological, and pathological examinations. Private rooms with special nurses, male or female, in the Hospital or in one of the numerous villas in the grounds of the various branches can be provided.

WANTAGE HOUSE

This is a Reception Hospital in detached grounds with a separate entrance, to which patients can be admitted. It is equipped with all the apparatus for the complete investigation and treatment of Mental and Nervous Disorders by the most modern methods; insulin treatment is available for suitable cases. It contains special departments for hydrotherapy by various methods, including Turkish and Russian baths, the prolonged immersion bath, Vichy Douche, Scotch Douche, Electrical baths, Plombières treatment, etc. There is an Operating Theatre, a Dental Surgery, an X-Ray Room, an Ultra-Violet Apparatus, and a Department for Diathermy and High-Frequency treatment. It also contains Laboratories for bio-chemical, bacteriological, and pathological research. Psychotherapeutic treatment is employed when indicated.

MOULTON PARK

Two miles from the Main Hospital there are several branch establishments and villas situated in a park and farm of 650 acres. Milk, meat, fruit and vegetables are supplied to the Hospital from the farm, gardens and orchards of Moulton Park. Occupational therapy is a feature of this Branch, and patients are given every facility for occupying themselves in farming, gardening and fruit growing.

BRYN-Y-NEUADD HALL

The Seaside house of St. Andrew's Hospital is beautifully situated in a Park of 830 acres, at Llanfairfechan, amidst the finest scenery in North Wales. On the North-West side of the estate a mile of sea-coast forms the boundary. Patients may visit this Branch for a short seaside change or for longer periods. The Hospital has its own private bathing house on the seashore. There is trout-fishing in the park.

At all the branches of the Hospital there are cricket grounds, football and hockey grounds, lawn tennis courts (grass and hard courts), croquet grounds, golf courses and bowling greens. Ladies and gentlemen have their own gardens, and facilities are provided for handicrafts, such as carpentry, etc.

For terms and further particulars apply to the Medical Superintendent (TELEPHONE Nos. : 2356 and 2357 Northampton), who can be seen in London by appointment.

To combat apathy and psychomotor retardation

There is ample evidence in the published literature to show that 'Benedrine' Tablets are primarily useful in depressions characterized by apathy and psychomotor retardation. With such patients the compound will often produce some or all of the following effects: (a) Increased mental activity, interest, and accessibility; (b) Increased self-assurance, optimism, and a sense of well-being; (c) Psychomotor stimulation, and an increased capacity for physical and mental effort.

It should be borne in mind, however, that 'Benedrine' Tablets are contra-indicated in patients manifesting anxiety, hyperexcitability, or restlessness. The tablets should be used only under medical supervision, and their suitability, as well as their correct dosage, should be determined for each individual.

'BENZEDRINE' TABLETS

Each tablet contains 5 mg. β -aminopropylbenzene (amphetamine) sulphate.

MAIN INDICATIONS: Fatigue and Depression, Narcolepsy, Post-encephalitic Parkinsonism, Primary Dysmenorrhoea, Travel Sickness, Alcoholism and Drug Addiction.

*Supplies for clinical trial sent on the signed request
of physicians.*

MENLEY & JAMES LIMITED
123 COLDHARBOUR LANE, LONDON, S.E.5