

CORRECTION

doi:10.1136/jnnp.2008.158964corr1

O L Lopez, J T Baker, A S Wahed, *et al.* Long-term effects of the concomitant use of memantine with cholinesterase inhibition in Alzheimer disease (*J Neurol Neurosurg Psychiatry* 2009;**80**:600–7). In the Methods section of the abstract the sentence should be “Of these patients, 140 (14.9%) used both ChEIs and memantine, 387 (41%) used only ChEIs, and 416 (44.1%) used neither.” Also, the corrected figures 1, 2 and 3 are published here.

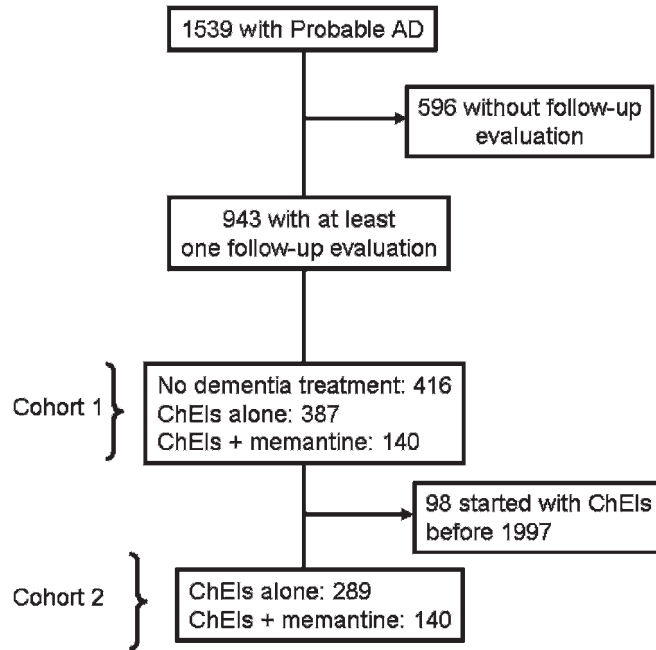


Figure 1 Flow chart of the patients examined from 1983 to 2004, and the number of patients in each cohort. AD, Alzheimer disease; ChEIs, cholinesterase inhibitors.

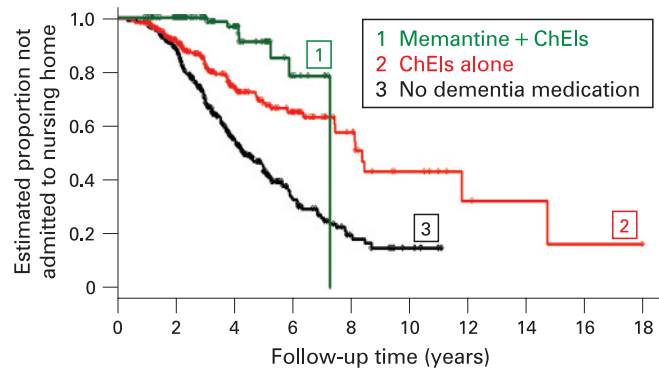


Figure 2 Time to nursing home admission in Cohort 1. ChEIs, cholinesterase inhibitors.

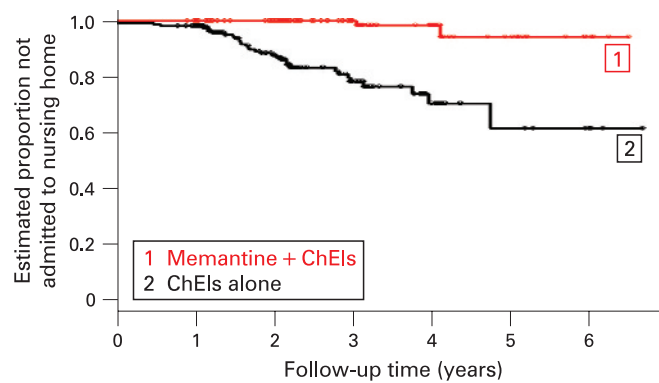


Figure 3 Time to nursing home admission in Cohort 2. ChEIs, cholinesterase inhibitors.

J Neurol Neurosurg Psychiatry: first published as 10.1136/jnnp.2008.158964corr1 on 14 August 2009. Downloaded from <http://jnnp.bmj.com/> on June 4, 2023 by guest. Protected by copyright.