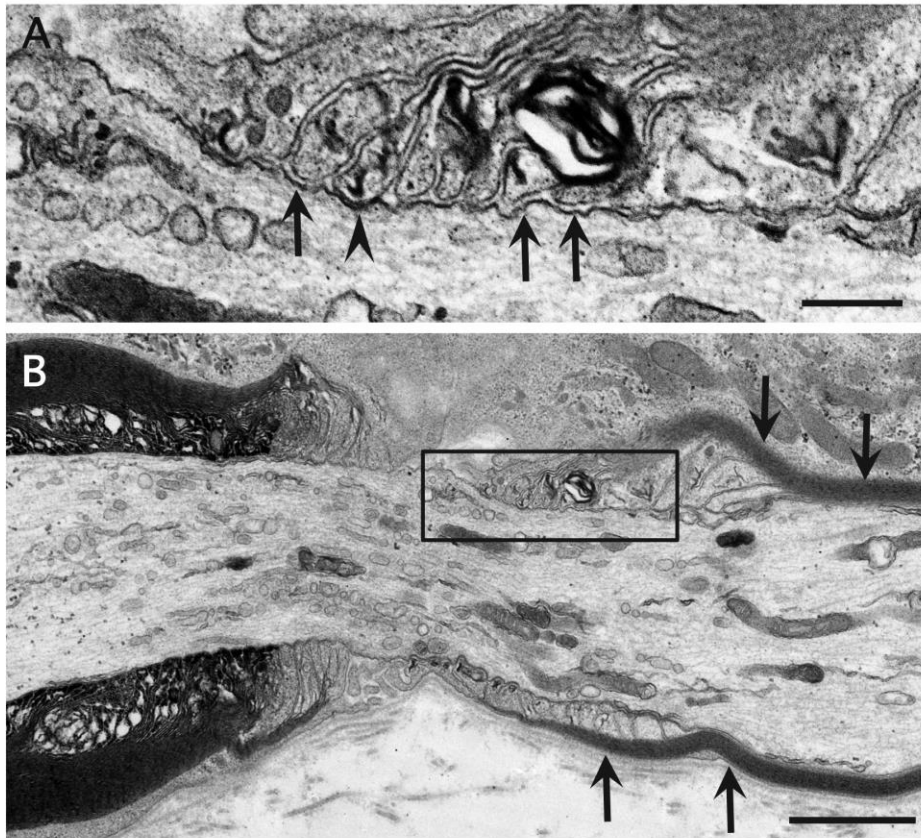


## Supplementary data 3



Electron microscopy findings in a longitudinal section from an antibody-negative patient. (A) A high powered view of the region in the black box in B. Although clear spaces devoid of electron dense regions between paranodal terminal loops and axolemma (arrows) were found, the extent of the widening was mild compared to that of antibody-positive patients shown in figures 3A and 3C with scale bars of same size. A terminal loop indicated by an arrowhead is still tightly connected to axolemma. (B) These spaces tended to be present at paranodes of remyelinating internodes with thin myelin (arrows). Uranyl acetate and lead citrate stain. Scale bars = 0.2  $\mu\text{m}$  (A) and 1  $\mu\text{m}$  (B).