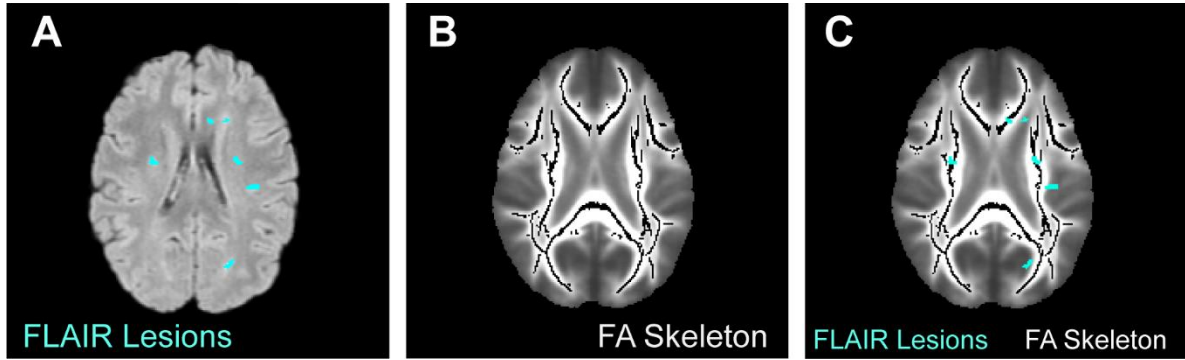


**eFigure 1 in Supplement. DTI Parameters Within Lesional and Non-lesional White Matter.**



In order to assess lesional and non-lesional FA/MD, T2 lesion maps were created and overlaid with the white matter skeleton. (A) T2/FLAIR lesion map, (B) TBSS derived mean FA skeleton, and (C) T2/FLAIR lesion map overlaid with TBSS derived mean FA skeleton.

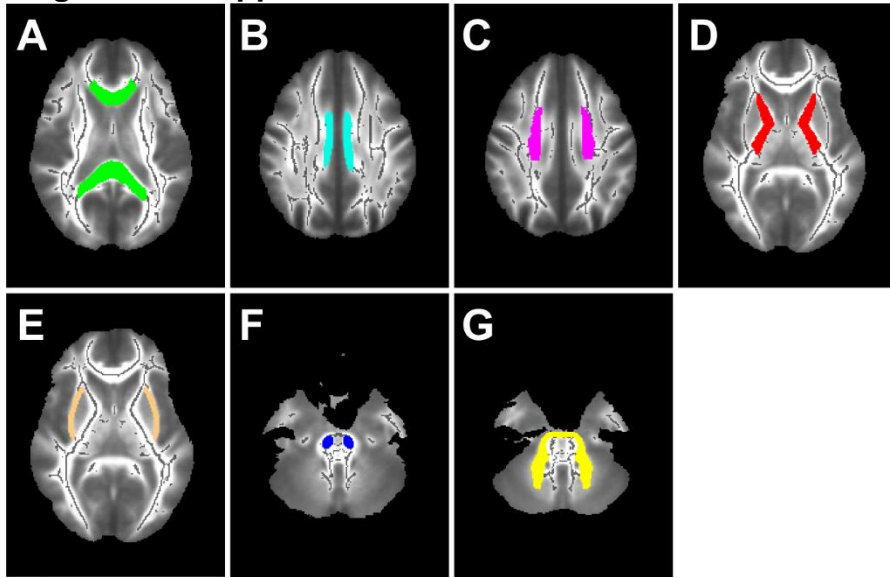
**eFigure 2 in Supplement. DTI Parameters Within Selected Anatomical Structures.**

Image masks of specific anatomical structures from a white matter structural atlas (JHU ICBM labels 1mm, <http://neurovault.org/images/1401>) were obtained and overlaid with the mean FA skeleton: (A) Corpus callosum, (B) cingulum, (C) superior corona radiata, (D) internal capsules, (E) external capsules, (F) brainstem corticospinal tracts, and (G) middle cerebellar peduncles.