

Supplementary material for the following manuscript:**Title**

The Epidemiology of Myasthenia Gravis in Denmark, Finland, and Sweden: A Population-Based Observational Study

Authors

John Vissing¹, Sari Atula², Mari Savolainen³, Juha Mehtälä⁴, Laila Mehkri⁵, Tina Bech Olesen⁵, Tero Ylisaukko-oja^{4,5}, Ingrid Lindberg-Schager⁶, Fredrik Berggren⁷, Fredrik Piehl^{8,9}

Affiliations

¹Copenhagen Neuromuscular Center, Department of Neurology, Rigshospitalet, University of Copenhagen, Copenhagen, Denmark;

²Clinical Neurosciences, Neurology, University of Helsinki and Helsinki University Hospital, Helsinki, Finland;

³UCB Pharma, Espoo, Finland;

⁴MedEngine Oy, Helsinki, Finland;

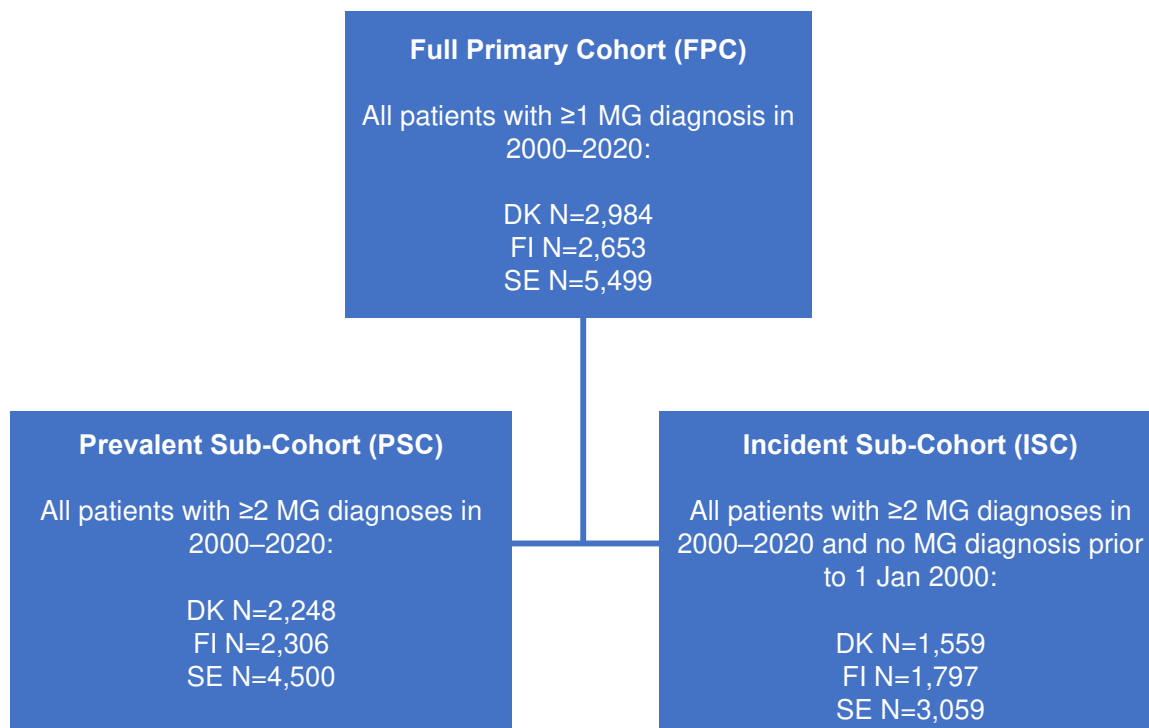
⁵MedEngine DK ApS, Copenhagen, Denmark;

⁶UCB Pharma, Stockholm, Sweden;

⁷UCB Pharma, Copenhagen, Denmark;

⁸Department of Clinical Neuroscience, Karolinska Institutet, Stockholm, Sweden;

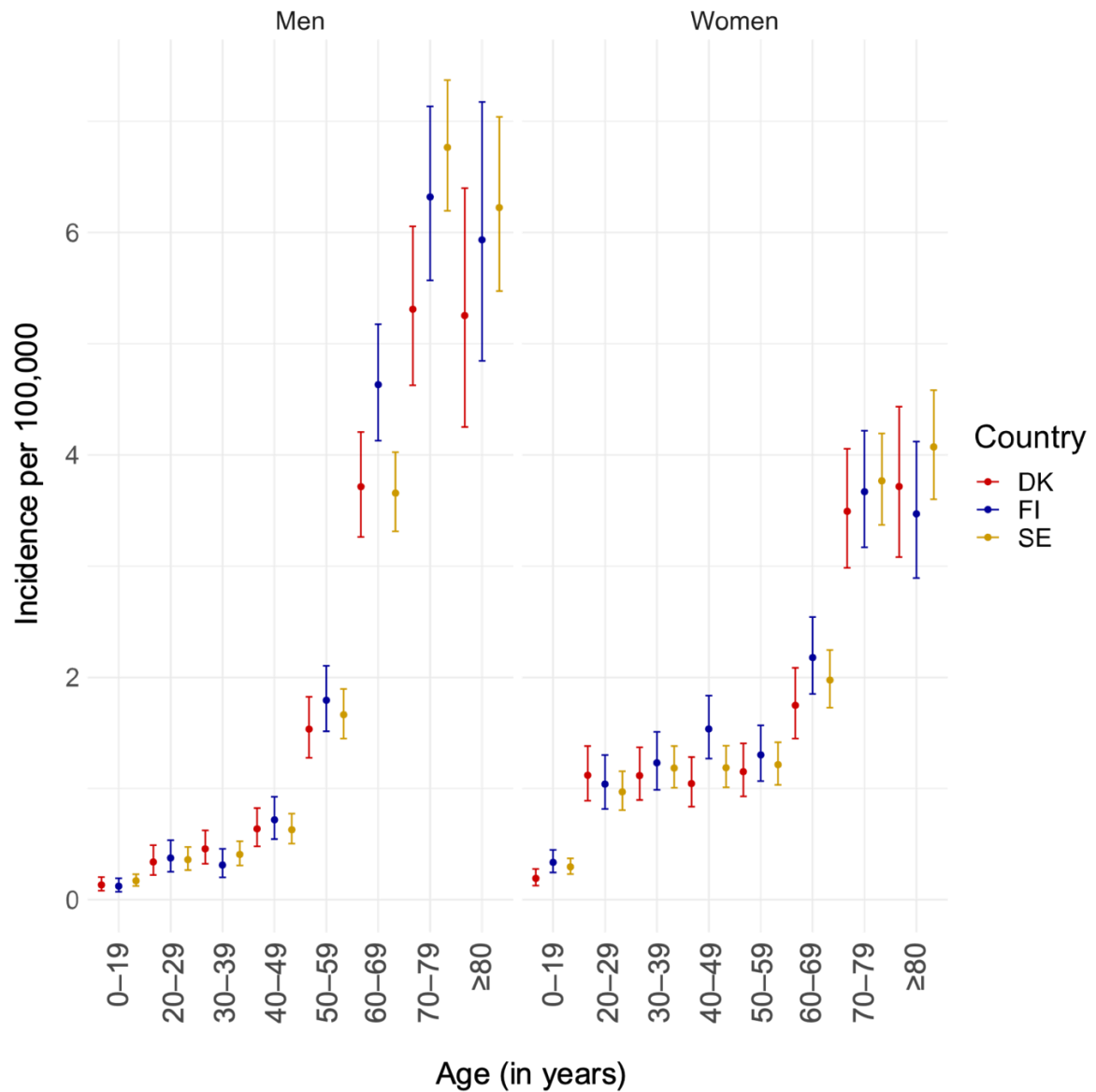
⁹Department of Neurology, Karolinska University Hospital, Stockholm, Sweden

SUPPLEMENTARY FIGURES**Supplementary Figure 1. Flow-chart of the study population.**

FPC, Full primary cohort; PSC, Prevalent Sub-Cohort; ISC, Incident Sub-Cohort; DK, Denmark; FI, Finland; SE, Sweden.

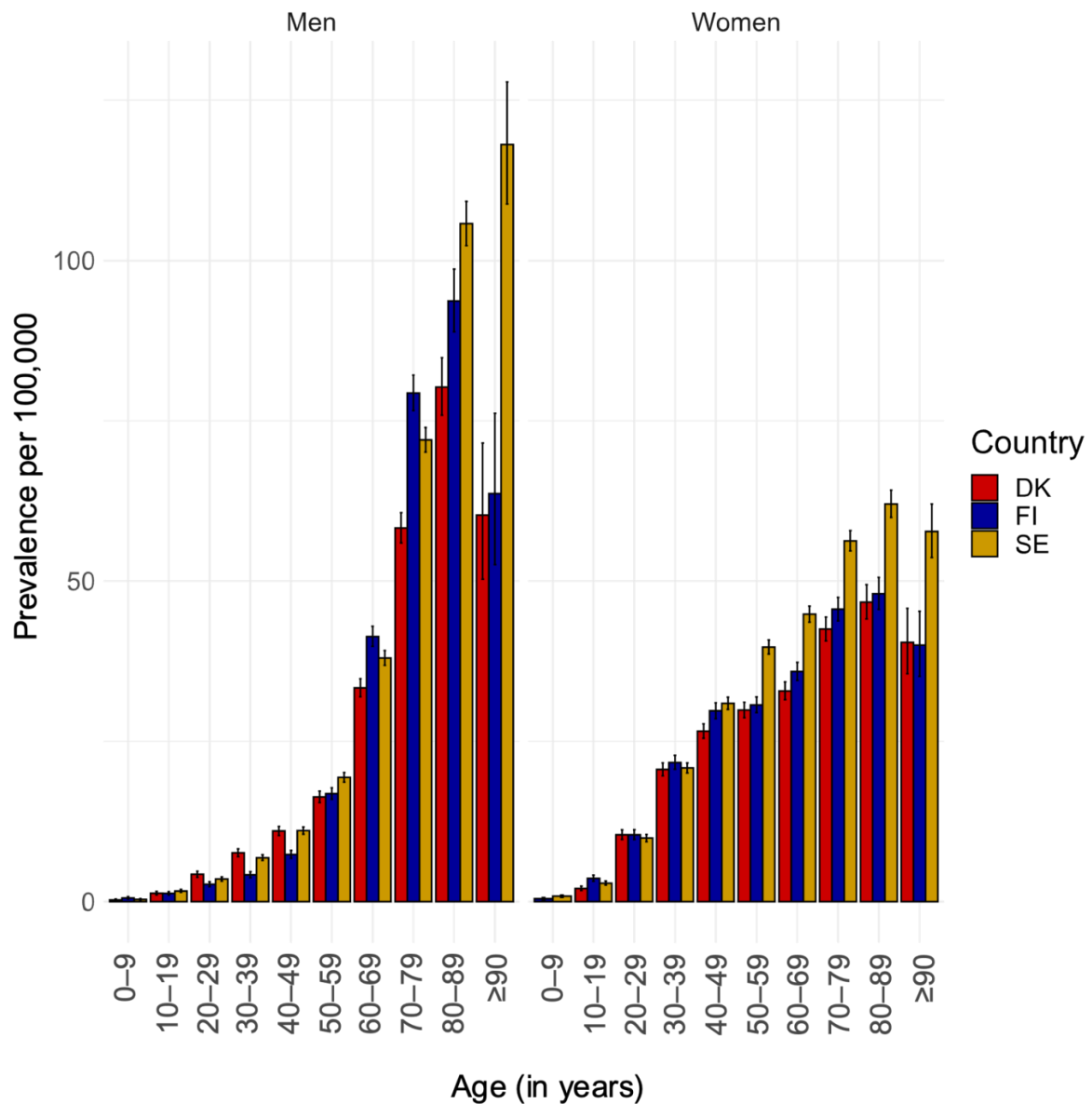
* A minimum of 12 months without an MG diagnosis before the date of diagnosis was required for a patient to be included in the incident cohort (prior MG diagnosis was screened from all available registry data).

Supplementary Figure 2. Incidence of myasthenia gravis per 100,000 in the Incident Sub-Cohort in Denmark, Finland, and Sweden in year 2000–2020, as stratified by age and sex.



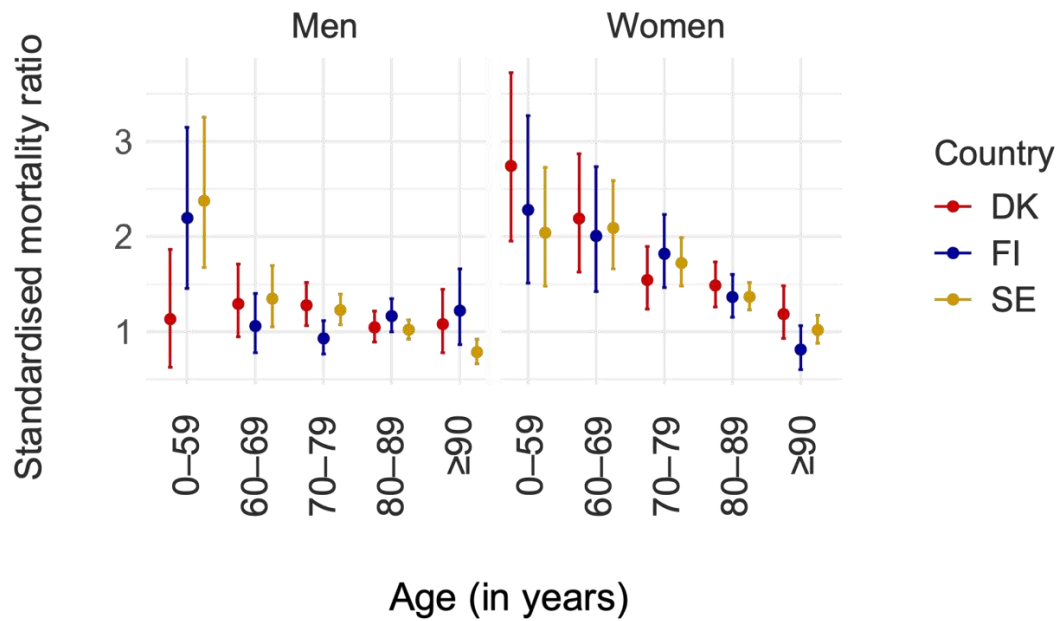
DK, Denmark; FI, Finland; SE, Sweden.

Supplementary Figure 3. Prevalence of myasthenia gravis in the Prevalent Sub-Cohort in Denmark, Finland, and Sweden in year 2000–2020, as stratified by age and sex.



DK, Denmark; FI, Finland; SE, Sweden.

Supplementary Figure 4. Standardised mortality ratio of myasthenia gravis in the Prevalent Sub-Cohort in Denmark, Finland, and Sweden in 2000–2020 compared to the background population, as stratified by age and sex.



DK, Denmark; FI, Finland; SE, Sweden.