



OPEN ACCESS

Original research

The MOG antibody non-P42 epitope is predictive of a relapsing course in MOG antibody-associated disease

Ganesha Liyanage,^{1,2} Benjamin P Trewin,^{3,4} Joseph A Lopez,¹ Jane Andersen,^{1,4} Fiona Tea,¹ Vera Merheb,¹ Kristy Nguyen,¹ Fiona X Z Lee,¹ Marzena J Fabis-Pedrini,^{5,6} Alicia Zou,¹ Ali Buckland,⁵ Anthony Fok,⁷ Michael H Barnett ⁸, Stephen W Reddel ^{8,9}, Romain Marignier,^{10,11} Aseel El Hajj,^{10,11} Mastura Monif,¹² Anneke van der Walt ¹², Jeannette Lechner-Scott,^{13,14,15} Allan G Kermod ^{5,16}, Tomas Kalincik ^{17,18}, Simon A Broadley ^{19,20}, Russell C Dale ^{4,21}, Sudarshini Ramanathan ^{3,4,8,9}, Fabienne Brilot ^{1,2,8} on behalf the Australasian MOGAD Study Group

► Additional supplemental material is published online only. To view, please visit the journal online (<http://dx.doi.org/10.1136/jnnp-2023-332851>).

For numbered affiliations see end of article.

Correspondence to

Dr Fabienne Brilot, Brain Autoimmunity Group, Kids Neuroscience Centre, Kids Research at the Children's Hospital at Westmead, Sydney, NSW 2145, Australia; fabienne.brilot@sydney.edu.au

Received 24 October 2023
Accepted 7 January 2024



© Author(s) (or their employer(s)) 2024. Re-use permitted under CC BY. Published by BMJ.

To cite: Liyanage G, Trewin BP, Lopez JA, et al. *J Neurol Neurosurg Psychiatry* Epub ahead of print: [please include Day Month Year]. doi:10.1136/jnnp-2023-332851

ABSTRACT

Background Myelin oligodendrocyte glycoprotein (MOG) IgG seropositivity is a prerequisite for MOG antibody-associated disease (MOGAD) diagnosis. While a significant proportion of patients experience a relapsing disease, there is currently no biomarker predictive of disease course. We aim to determine whether MOG-IgG epitopes can predict a relapsing course in MOGAD patients.

Methods MOG-IgG-seropositive confirmed adult MOGAD patients were included (n=202). Serum MOG-IgG and epitope binding were determined by validated flow cytometry live cell-based assays. Associations between epitopes, disease course, clinical phenotype, Expanded Disability Status Scale and Visual Functional System Score at onset and last review were evaluated.

Results Of 202 MOGAD patients, 150 (74%) patients had MOG-IgG that recognised the immunodominant proline42 (P42) epitope and 115 (57%) recognised histidine103/serine104 (H103/S104). Fifty-two (26%) patients had non-P42 MOG-IgG and showed an increased risk of a relapsing course (HR 1.7; 95% CI 1.15 to 2.60, p=0.009). Relapse-freedom was shorter in patients with non-P42 MOG-IgG (p=0.0079). Non-P42 MOG-IgG epitope status remained unchanged from onset throughout the disease course and was a strong predictor of a relapsing course in patients with unilateral optic neuritis (HR 2.7, 95% CI 1.06 to 6.98, p=0.038), with high specificity (95%, 95% CI 77% to 100%) and positive predictive value (85%, 95% CI 45% to 98%).

Conclusions Non-P42 MOG-IgG predicts a relapsing course in a significant subgroup of MOGAD patients. Patients with unilateral optic neuritis, the most frequent MOGAD phenotype, can reliably be tested at onset, regardless of age and sex. Early detection and specialised management in these patients could minimise disability and improve long-term outcomes.

INTRODUCTION

Myelin oligodendrocyte glycoprotein antibody-associated disease (MOGAD) is a central nervous system (CNS) disease characterised by the presence

WHAT IS ALREADY KNOWN ON THIS TOPIC

⇒ Myelin oligodendrocyte glycoprotein (MOG) IgG seropositivity is a prerequisite in the diagnosis of MOG antibody-associated disease (MOGAD). While a significant proportion of patients are affected by a relapsing disease, there is currently no biomarker predictive of disease course.

WHAT THIS STUDY ADDS

⇒ In this retrospective cohort study, a subgroup of adult MOGAD patients with MOG-IgG bound to a non-dominant MOG epitope and showed a significantly increased risk of a relapsing course.

HOW THIS STUDY MIGHT AFFECT RESEARCH, PRACTICE OR POLICY

⇒ These findings suggest that non-P42 MOG-IgG may be the first diagnostic predictor of a relapsing course in a distinct subgroup of MOGAD patients.

of IgG autoantibodies targeting MOG (MOG-IgG) and demyelinating lesions affecting the optic nerve, spinal cord, brain or brainstem in children and adults.¹⁻⁹ While some patients experience a monophasic disease course, approximately 40% of adults and 30% of children experience a relapse within 5 years of disease onset¹⁰⁻¹² and early evidence suggests that longer follow-up may reveal higher rates of relapse.¹³ Higher degree of disability may be associated with recurrent demyelinating episodes.^{11 14 15} Thus, a key priority in the prognostication of MOGAD is identifying patients who are at risk of relapse as early as possible, such as at disease onset. Such prediction could aid management by selecting appropriate immunotherapy while avoiding unnecessary immunosuppression in monophasic patients. Furthermore, the early identification and inclusion of patients at risk of relapse in clinical trials would increase the statistical power of studies aimed at discerning effective therapeutic strategies for relapsing MOGAD.²

Several factors associated with relapse have been investigated. One of these is persisting MOG-IgG seropositivity throughout the disease.^{11 16–20} Furthermore, optic neuritis (ON), younger age in adults or early relapse within the first 12 months of onset has shown to be associated with an elevated risk of relapsing disease.^{21 22} However, a true predictor of a relapsing course, assessable prior to clinical relapse, is still lacking.

The detection of MOG-IgG by cell-based assays is an essential criterion in MOGAD diagnosis and can be used to determine the seropositivity^{2 23–25} and epitope^{26–28} of MOG-IgG. MOG-IgG has been reported to bind to amino acids at two key antigenic binding regions, or epitopes for brevity, located on the extracellular Ig-like domain of MOG: proline42 (P42),^{27 28} and histidine103/serine104 (H103/S104).^{28 29} Previously, we reported that 75% of adult patients, whose MOG-IgG bound an amino acid other than P42, exhibited a relapsing course.²⁷ However, whether this preliminary finding had any diagnostic and prognostic value in predicting relapsing course for clinical purposes was not determined.

Here, we have undertaken an in-depth analysis of MOG-IgG binding patterns and their associations with relapse in a large cohort of adult MOGAD patients with detailed clinical phenotypes. We hypothesised that non-P42 epitope binding would be predictive of a relapsing course.

METHODS

Study cohort

Adult patients who were MOG-IgG-seropositive with a clinical phenotype consistent with MOGAD (n=202, >16 years of age at disease onset) were recruited between January 2013 and June 2022 out of n=345 MOGAD adults tested seropositive (minimum follow-up time of 1 year; median follow-up 4 years, IQR 2.2–7.2) (table 1). Patients were diagnosed in accordance with the recently published International MOGAD criteria.² Clinical episodes were reported by neurologists and the time of collection of serum samples were classified as onset, remission or relapse. A relapse was defined as new CNS symptoms or signs lasting >24 hours, in the absence of other causes, and clinically and/or radiologically compatible with a MOGAD episode (table 1).² Remission was defined as disease stability >30 days after an onset or relapse. Clinical data were collected where available and included episode phenotype, date of onset episode and last clinical review by a neurologist, Expanded Disability Status Scale (EDSS) and Visual Functional System Score (VFSS) scores at nadir of the onset episode and at last review, and date of first relapse (table 1). MOGAD phenotypes were categorised at onset as either ON, which was subgrouped into unilateral ON (UON) or bilateral ON (BON), or ON not otherwise specified, transverse myelitis (TM), ON and TM, brain (including brainstem or cerebellar deficits and acute disseminated encephalomyelitis), and ‘mixed’ if patients experienced a combination of any phenotypes other than ON and TM (table 1).

MOG-IgG epitope testing

MOG-IgG testing (IgGs (H+L) and IgG1) was performed on patient sera with a validated flow cytometry live cell-based assay (online supplemental methods) and as previously described.^{23 27} The MOG-IgG test has been available in Australia since December 2012. Two antigenic binding regions including P42 or H103/S104, herein referred to as P42 and H103/S104 MOG-IgG epitopes for brevity, were assessed using two MOG mutants: MOG P42S and MOG H103A/S104E. The MOG P42S mutant contained full-length human MOG with a mutation at

position 42, where proline was substituted for serine.^{27 28} The MOG H103A/S104E mutant consisted of full-length human MOG in which the histidine and serine at positions 103 and 104 were substituted with alanine and glutamic acid.²⁸ While some structural changes may be induced by the mutations at residues 42, 103 and 104, none of them significantly altered the high expression of surface MOG P42S or MOG H103A/S104E mutants compared with human wild-type (online supplemental methods).^{27 28} Binding to P42 and H103/S104 epitopes were determined by subtracting the binding to MOG P42S or MOG H103A/S104E mutants from human MOG. Optimal thresholds for P42 and H103/S104 MOG-IgG binding were calculated after receiver-operating-characteristic (ROC) analysis (online supplemental figure 1A–D).³⁰ Epitope and non-epitope groups were plotted such that MOG-IgG binding to P42 and H103/S104 were above the threshold while MOG-IgG binding to non-P42 and non-H103/S104 were below and appeared negative.

Statistical analysis

Pairwise comparisons between continuous data were made using the Wilcoxon rank-sum test, with Bonferroni correction for multiple pairwise tests. Fisher’s exact test was used to compare nominal variables and association of epitopes groups and acute immunotherapy. Univariate and multivariable Cox proportional hazard models were performed to test for associations between epitopes, disease course and clinical phenotypes. Kaplan-Meier analysis was performed and included relapsing and monophasic patients, with monophasic patients included as censored events. A number of censored observations are shown in figures. P values were two sided, and statistical significance was set at p<0.05. All statistical analyses were performed by using R V.4.0.5 (The R Foundation).

RESULTS

P42 and H103/S104 were key epitopes targeted by MOG-IgG in adult MOGAD patients

The MOG-IgG epitope serum profile was characterised in a total of 202 adult MOG-IgG-seropositive confirmed MOGAD patients. The demographic and baseline clinical characteristics of this cohort are summarised in table 1 and are consistent with prior studies of adult MOGAD cases.^{11 13 27 31} Patients had a monophasic (65/202; 32%) or relapsing disease course (137/202; 68%). The duration of disease follow-up was longer in relapsing patients compared with monophasic patients (table 1). ON was the most frequent clinical phenotype at onset (table 1). Concurrent with previous studies,^{27 28} P42 was the most commonly recognised epitope (150/202; 74%), whereas 52 (26%) sera recognised an epitope outside of the P42 epitope (non-P42) (figure 1A). The H103/S104 residue was also found to be part of a key epitope recognised by 115 (57%) sera, whereas 87 (43%) did not bind to H103/S104 (figure 1A). Overall, MOG-IgG commonly recognised both P42 and H103/S104 epitopes (n=80, 40%) while a minority recognised a non-P42 and non-H103/S104 epitope (n=17, 8%) (figure 1B). MOG-IgG binding to P42, rather than the H103/S104 epitope, was prevalent in 70 sera (35%) while 35 (17%) recognised the H103/S104 but not the P42 epitope.

There was no significant difference in sex, age of patients and time between onset and first collected sample between epitope groups (online supplemental figure 2A,B). There was no significant difference in EDSS and VFSS scores between epitope groups, or combination thereof, at either onset or last review (figure 1C,D, online supplemental figure 3A,B). Patients

Table 1 Demographics, clinical and MOG-IgG characteristics of MOGAD patients

	Total	Monophasic	Relapsing	P value*
n	202	65	137	
Age, median, year (IQR)	39.89 (30.85–51.24)	37.96 (28.43–54.22)	40.53 (31.60–50.75)	0.681
Sex, male, n (%)	81 (40.1)	27 (41.5)	54 (39.4)	0.893
Follow-up time, median, year (IQR)	4.07 (2.18–7.23)	2.79 (1.65–4.21)	5.33 (2.47–9.60)	<0.001
Time to first relapse, median, month (IQR), n†	–	–	7.03 (3.00–24.63), 113	–
ARR, median (IQR), n†	–	–	0.38 (0.19–0.57), 86	–
Phenotype at onset, n (%)				0.42
UON	76 (37.6)	22 (33.8)	54 (39.4)	
BON	61 (30.2)	22 (33.8)	39 (28.5)	
ON (not otherwise specified)	5 (2.5)	0 (0.0)	5 (3.6)	
ON/TM	7 (3.5)	4 (6.2)	3 (2.2)	
TM	35 (17.3)	10 (15.4)	25 (18.2)	
Brain	14 (6.9)	5 (7.7)	9 (6.6)	
Mixed	4 (2.0)	2 (3.1)	2 (1.5)	
Phenotype over whole disease course, n (%)				–
UON‡	62 (30.7)	22 (33.8)	40 (29.2)	
BON	31 (15.3)	22 (33.8)	9 (6.6)	
ON (not otherwise specified)	2 (1.0)	0 (0.0)	2 (1.5)	
ON (mixed)§	24 (11.9)	0 (0.0)	24 (17.5)	
ON/TM	23 (11.4)	4 (6.2)	19 (13.9)	
TM¶	25 (12.4)	10 (15.4)	15 (10.9)	
Brain	9 (4.5)	5 (7.7)	4 (2.9)	
Mixed	26 (12.9)	2 (3.1)	24 (17.5)	
Disease stage at first serum collection, n (%)				–
Onset	80 (39.6)	39 (60.0)	41 (29.9)	
Relapse	32 (15.8)	–	32 (23.4)	
Remission	73 (36.1)	25 (38.5)	48 (35.0)	
Remission before first relapse	15 (7.4)	–	15 (10.9)	
Unknown	2 (1.0)	1 (1.5)	1 (0.7)	
EDSS, median (IQR)				
Onset**, n†	3.00 (2.00–4.00), 122	3.00 (2.00–4.00), 44	3.00 (2.00–4.00), 78	0.628
Last Review, n†	1.00 (0.00–2.00), 148	0.00 (0.00–1.00), 44	1.50 (0.00–3.00), 104	<0.001
VFSS, median (IQR)				
Onset**, n†	3.00 (0.00–5.00), 111	2.00 (0.00–5.00), 40	3.00 (0.50–5.00), 71	0.537
Last review, n†	0.00 (0.00–2.00), 134	0.00 (0.00–0.25), 40	1.00 (0.00–2.00), 94	0.001
MOG-IgG titre, clear positive, n (%)††	77 (96.2)	38 (97.4)	39 (95.1)	0.084
Non-P42 MOG-IgG, n (%)	52 (25.7)	8 (12.3)	44 (32.1)	0.003
Non-H103/S104 MOG-IgG, n (%)	87 (43.1)	28 (43.1)	59 (43.1)	1
Combined P42 and H103/S104 epitope, n (%)				0.013
P42 and H103/S104	80 (39.6)	30 (46.2)	50 (36.5)	
P42 and non-H103/S104	70 (34.7)	27 (41.5)	43 (31.4)	
H103/S104 and non-P42	35 (17.3)	7 (10.8)	28 (20.4)	
Non-P42 and non-H103/S104	17 (8.4)	1 (1.5)	16 (11.7)	

*P values were computed based on comparisons between monophasic and relapsing patients.

†Number of patients with ON, TM, brain and Mixed phenotypes for whom the data were available.

‡UON as a phenotype at relapse was 4.5 times more frequent than BON.

§ON (mixed) refers to subsequent attacks of UON and BON.

¶Included short TM (n=7), longitudinal extended TM (n=4), a combination of short TM and longitudinal extended TM (n=4) and TM not otherwise specified (n=10).

**EDSS and VFSS scores assessed at nadir of the onset.

††MOG-IgG titre was calculated for patient sera collected at onset.

AAR, annualised rate of relapse; BON, bilateral optic neuritis; EDSS, Expanded Disability Status Scale; MOG, myelin oligodendrocyte glycoprotein; ON, optic neuritis; TM, transverse myelitis; UON, unilateral optic neuritis; VFSS, Visual Functional Systems Score.

displayed a lower EDSS and VFSS score at the last review compared with onset scores within all epitope categories, except in the non-P42 and non-H103/S104 epitope group in which there was no significant difference in VFSS scores at onset and last review, likely due to small sample size (figure 1C,D, online supplemental table 1).

Patients with non-P42 MOG-IgG exhibited increased risk of a short-term relapsing course compared with patients with P42 MOG-IgG

We next sought to examine whether epitopes could predict a relapsing disease course. Interestingly, 44/52 (85%) patients

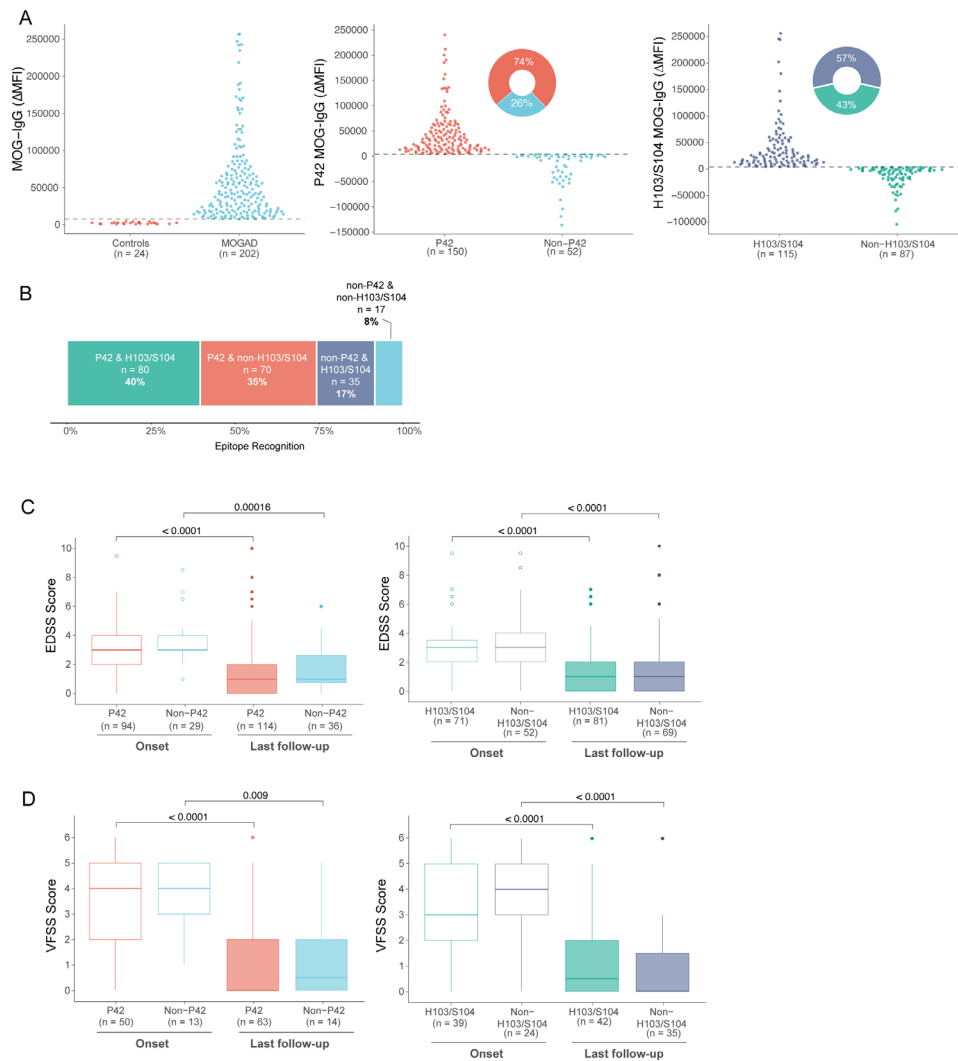


Figure 1 P42 and H103/S104 epitopes were the key MOG-IgG epitopes in adults. (A) MOG-IgG was assessed in 202 patient sera, and P42 and H103/S104 epitope statuses were determined. (B) Sera with MOG-IgG recognise one, both or neither of the two immunodominant epitopes. (C) EDSS and (D) VFSS scores were compared between MOG-IgG epitopes, and between disease onset and last follow-up date. EDSS, Expanded Disability Status Scale; MOG, myelin oligodendrocyte glycoprotein; VFSS, Visual Functional Systems Score.

with non-P42 MOG-IgG had a relapsing course, compared with 93/150 (62%) patients with P42 MOG-IgG (figure 2A). This association remained true when patient sera were tested with an anti-human IgG1 secondary antibody, in which 41 of 45 patients with non-P42 MOG-IgG were confirmed. This ensured applicability to international MOG-IgG testing centres (online supplemental figure 1E,F). In contrast, there was no difference in the proportion of relapsing patients whose sera bound a H103/S104 and non-H103/S104 epitope (figure 2B). Univariate Cox proportional hazard model revealed that patients with non-P42 MOG-IgG had 70% of increased risk of a relapsing course compared with patients whose MOG-IgG bound P42 (HR 1.7; 95% CI 1.15 to 2.60; $p=0.009$; figure 2C), highlighting an association between a non-P42 epitope and a relapsing course. However, there was no change in the hazard of having a relapsing course based on H103/S104 epitope status (HR 1; 95% CI 0.66 to 1.43; $p=0.891$; figure 2C). MOG-IgG-seropositive patients whose sera recognised the H103/S104 epitope, irrespective of the binding to the P42 epitope, were not more likely to exhibit a relapsing course. However, patients whose MOG-IgG recognised a non-P42 and non-H103/S104 epitope had higher risk of exhibiting

a relapsing course than those who recognised the combination of P42 and non-H103/S104 epitopes (HR 2.5; 95% CI 1.26 to 4.84; $p=0.009$). We next focused on the P42 epitope due to higher applicability of testing one rather than two epitopes in diagnostics. There was no difference in phenotype, disease severity or MOG-IgG titre at onset between relapsing patients with sera binding the P42 epitope compared with the non-P42 epitope (online supplemental table 2). The duration of relapse-freedom was significantly longer in patients with a P42 epitope than those with a non-P42 epitope ($p=0.0079$, log-rank test, median time to first relapse of 2.7 years, 95% CI 1.54 to 5.99 vs 0.9 years, 95% CI 0.51 to 3.41; figure 2D). For instance, at 5 years post-onset, the relapse-freedom probability of patients with non-P42 MOG-IgG epitope was 0.14 (95% CI 0.06 to 0.37), compared with 0.41 (95% CI 0.32 to 0.53), among patients with P42 MOG-IgG epitope. Notably, there was no significant association between acute corticosteroid immunotherapy during the first clinical episode or lack thereof, and the two epitope groups ($p=0.159$, online supplemental figure 4), suggesting that, although treatment could influence MOGAD disease course, patients with a specific

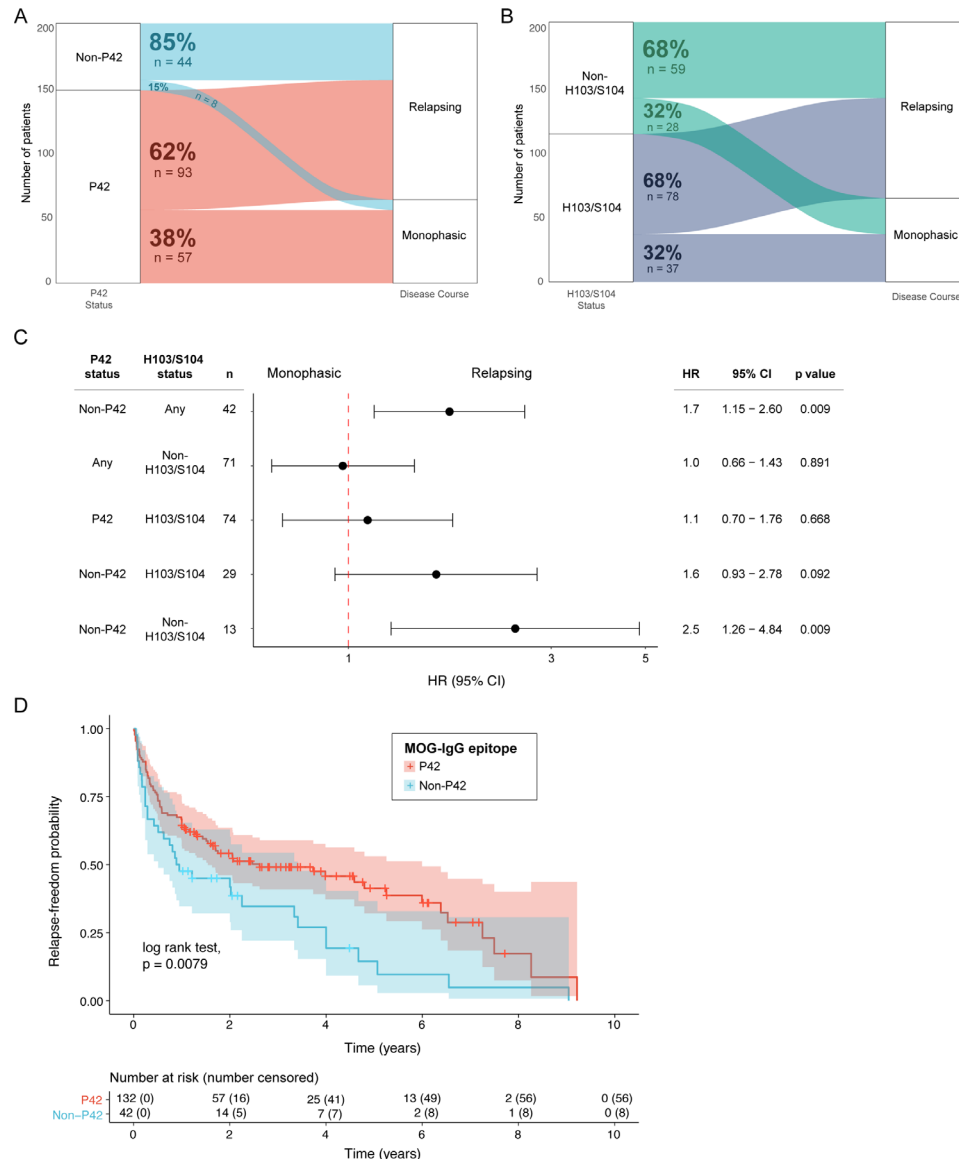


Figure 2 Non-P42 MOG-IgG was associated with a relapsing disease course. Alluvial plots demonstrating the proportion of MOGAD patients (n=202) with monophasic and relapsing disease course and their (A) P42 MOG-IgG and (B) H103/S104 MOG-IgG status. (C) Univariate Cox proportional hazard model illustrating the HR of a relapsing disease course in each epitope group compared with the corresponding reference group as follows: patients with MOG-IgG binding to a P42 epitope (top row), H103/S104 epitope (second row) and P42 and non-H103/S104 epitope (last three rows). (D) Kaplan-Meier curve showing the relapse-free period of patients with P42 MOG-IgG compared with non-P42 MOG-IgG (number of censored observations and number at risk are shown below the curve). 95% CIs are shown in shaded areas on both sides of the survival curves. MOGAD, myelin oligodendrocyte glycoprotein antibody-associated disease.

MOG-IgG epitope were not treated differently during the first episode.

The association between a non-P42 epitope and a relapsing disease course was the strongest in patients with UON

We next investigated whether associations between individual epitopes and disease course varied across MOGAD phenotypes. Both groups of patients whose serum MOG-IgG bound P42 and non-P42 epitopes displayed similar phenotypic profiles, with ON and TM being the most common phenotypes in both groups (figure 3A).

Since many MOGAD patients experience subsequent attacks that are phenotypically diverse, for example, ON then TM or BON then UON, patients were examined based on the phenotype at onset: ON, UON, BON, TM and brain followed by any

clinical relapse (figure 3B). Of patients presenting with ON, those with non-P42 MOG-IgG exhibited 80% higher risk of a relapsing course compared with those with P42 MOG-IgG (HR 1.8; 95% CI 1.11 to 3.03; p=0.02; figure 3B). Patients with UON at onset and non-P42 MOG-IgG exhibited more than double the risk of a relapsing course compared with those with P42 MOG-IgG (HR 2.5; 95% CI 1.26 to 5; p=0.01; figure 3B). In contrast, in patients with BON or a brain phenotype at onset, MOG-IgG binding to non-P42 epitope did not significantly increase the hazard of having a relapsing course compared with P42 epitope binding (p>0.5; figure 3B). Patients with TM and non-P42 MOG-IgG showed 2.3 higher hazard of a relapsing course than those with P42 MOG-IgG, although this did not reach significance (95% CI 0.90 to 5.85; p=0.08; figure 3B).

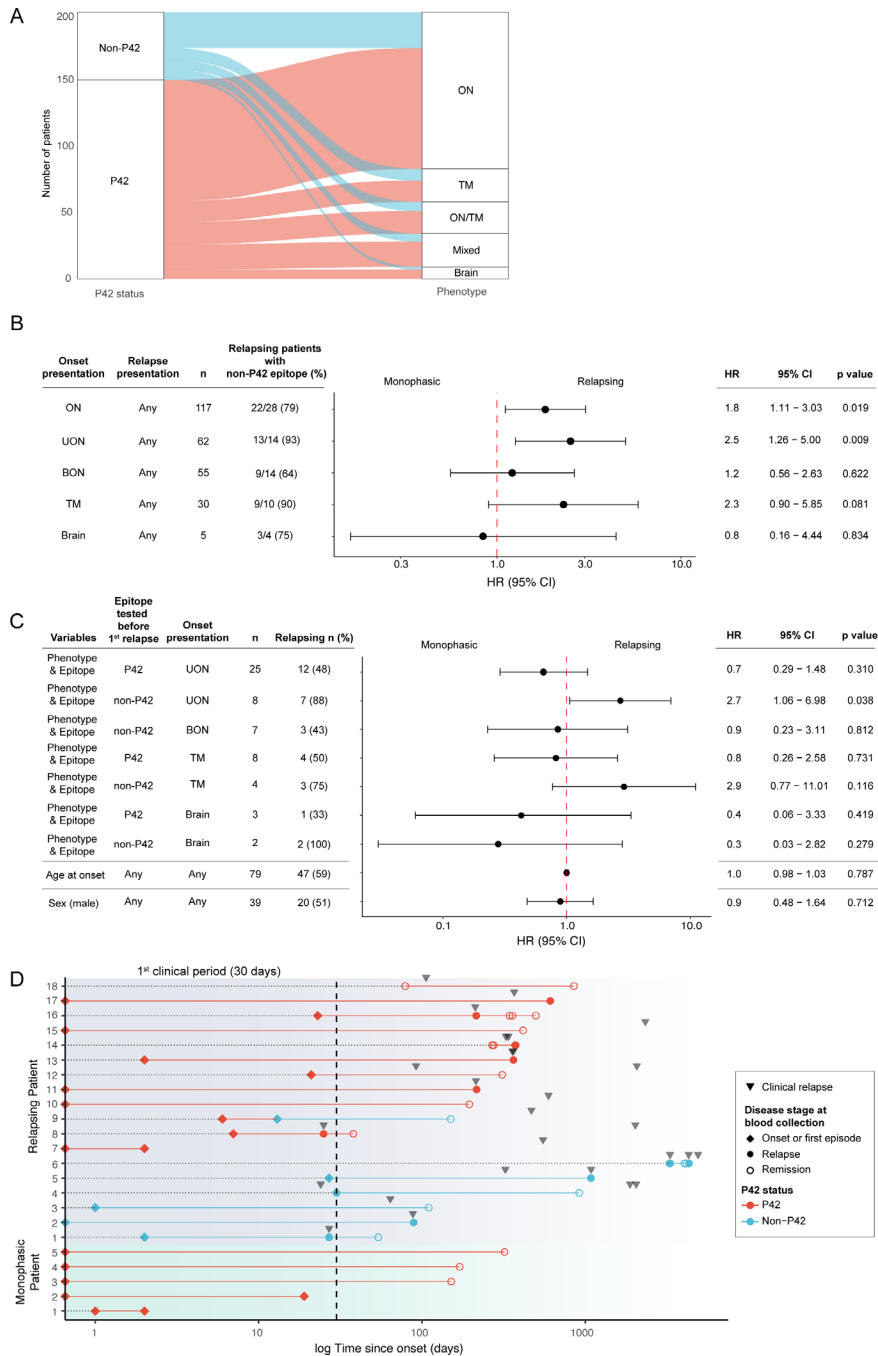


Figure 3 Non-P42 MOG-IgG was the strongest predictor of a relapsing course in patients with UON at onset. (A) Alluvial plots representing the distribution of MOG-IgG epitope status across MOGAD clinical phenotypes including ON, TM, ON/TM, mixed and brain. Patients with ON included UON and BON. (B) Univariate Cox proportional hazard model showing the risk of a relapsing course in patients with non-P42 MOG-IgG within each phenotype category compared with the reference group (patients with P42 MOG-IgG within that phenotype category). (C) Multivariable Cox proportional hazard model showing the risk of a relapsing course in patients with UON, BON, TM and brain phenotypes at onset and whose non-P42 MOG-IgG were tested before the first relapse. The reference patients were patients with BON and non-P42 MOG-IgG. (D) Longitudinal serial samples from relapsing (top; purple background) and monophasic patients (bottom; green background) showing that MOG-IgG epitopes remain highly stable over time irrespective of treatment. Patient sera were assessed from the first sample to the last sample collected for a median duration of 126 days in relapsing patients and 160 days in monophasic patients. Basic information on treatment or lack thereof at time of blood collection were available for 10 patients and treatments included corticosteroids, rituximab, mycophenolate or untreated. Samples collected at onset or during the first clinical episode (within 30 days of the onset, shown by the dotted line) were defined as ‘sample collected at onset or the first episode’, and diamonds were used to represent these blood collections. Inverted triangles show clinical relapses. BON, bilateral optic neuritis; ON, optic neuritis; TM, transverse myelitis; UON, unilateral optic neuritis.

When patients having the same clinical phenotype throughout the disease course were analysed, non-P42 MOG-IgG was associated with a relapsing course among patients with ON, who had double the risk of experiencing a relapsing course than

ON patients with P42 MOG-IgG ($p=0.055$, online supplemental figure 5). BON patients with non-P42 MOG-IgG did not show an increased risk of exhibiting a relapsing course compared with those with P42 MOG-IgG (online supplemental

figure 5). However, UON patients with a non-P42 MOG-IgG almost exclusively exhibited a relapsing course (9/10, 90%) and had more than double the risk of a relapsing course compared with patients with UON and P42 MOG-IgG (HR 2.4; 95% CI 1.04 to 5.48; $p=0.04$; online supplemental figure 5). Notably, disease severity at onset varied between patients with UON and BON. Patients with BON had significantly higher VFSS scores at onset compared with patients with UON, and a similar trend was observed in EDSS scores (online supplemental figure 6A,B). Among patients with TM, 5/6 (83%) of patients with non-P42 MOG-IgG relapsed compared with those with P42 MOG-IgG (HR 2.8; 95% CI 0.81 to 9.80; $p=0.1$; online supplemental figure 5).

Multivariable Cox proportional hazard model on patients who had a sample collected before the first relapse revealed that compared with patients with BON and P42 MOG-IgG, those with onset UON and non-P42 MOG-IgG exhibited more than double the risk of exhibiting a relapsing course (HR 2.7; 95% CI 1.06 to 6.98; $p=0.038$; figure 3C). Relapse freedom in these patients lasted significantly shorter than those with a P42 MOG-IgG ($p=0.0042$, online supplemental figure 7). Other variables, such as age at onset and sex, did not associate with a relapsing course (figure 3C).

Non-P42 MOG-IgG epitopes remained highly stable over time

Although MOG-IgG detection in serum at onset is recommended,² the first sample may be collected during remission. To evaluate the stability of MOG-IgG epitopes over time, 57 sera were collected from 18 relapsing and 5 monophasic MOG-IgG-seropositive patients at disease onset or remission before first relapse, and subsequent serial samples collected at different time points throughout their disease course (figure 3D). Seventeen out of 18 (94%) relapsing patients and 5/5 monophasic patients had sera that bound to the same MOG-IgG epitope over time (figure 3D), with no change between onset or remission before first relapse, and subsequent collected sera, and irrespective of treatment or lack thereof (figure 3D).

Non-P42 MOG-IgG combined with onset UON strongly predicted an MOGAD relapsing disease

At onset, MOG-IgG-seropositive patients mainly presented with UON ($n=76$, 38%), BON ($n=61$, 30%), TM ($n=35$, 17%) or brain ($n=14$, 7%) (figure 4). A quarter of patients with UON and a third with TM had non-P42 MOG-IgG. Detection of the

non-P42 epitope was associated with a relapsing course in 95% of UON and 92% of TM, but only in 69% and 75% of BON or brain patients, respectively. Specificity and positive predictive value were high in the UON group.²⁴ Age at onset and time to first relapse were not different between groups, suggesting the prognosis utility of testing non-P42 MOG-IgG at onset.

DISCUSSION

This study provides definite evidence of the utility of non-P42 MOG-IgG epitopes as prognostic biomarkers for relapsing disease in MOGAD. The overall risk of a relapsing course in patients whose MOG-IgG recognised a non-P42 epitope was over three times higher than those who recognised the immunodominant P42 epitope. A seropositive non-P42 MOG-IgG test predicted a relapsing course in adult patients with UON with high specificity and positive predictive value. This association was particularly robust at disease onset, making MOG-IgG epitope detection a reliable predictor that can be tested before the occurrence of the first relapse.

Adults with MOGAD experience motor disability in 20%–40% of cases, and up to 20% experience lasting visual acuity impairments. Over 60% of patients with relapsing MOGAD had some residual deficit in one or more domains.^{11 14} Disability appears to be driven by acute clinical episodes,^{14 32} which was also evidenced here, where patients with relapsing disease exhibited significantly higher motor and visual disability at last review compared with monophasic patients. Therefore, the identification and appropriate treatment of relapsing patients is crucial to minimise disability. In the current study, there were no differences in motor and visual function scores at onset between monophasic and relapsing patients. This suggests the benefit of additional, non-clinical tools such as epitope testing to predict a relapsing course. This may also facilitate informed decision-making regarding therapeutic approaches including the early identification of patients to initiate maintenance immunotherapy, and the selection of patients for clinical trials designed for relapsing patients. Current treatment strategies are largely based on empirical data and clinical trials—which have only recently commenced for MOGAD (NCT05271409; NCT05063162)—are crucial for evidence-based management of the disease.

Our study significantly builds on our previous observation in which relapsing patients with ON were more likely to recognise an MOG-IgG epitope outside P42.²⁷ Our current data, in a cohort more than double the size with extended follow-up

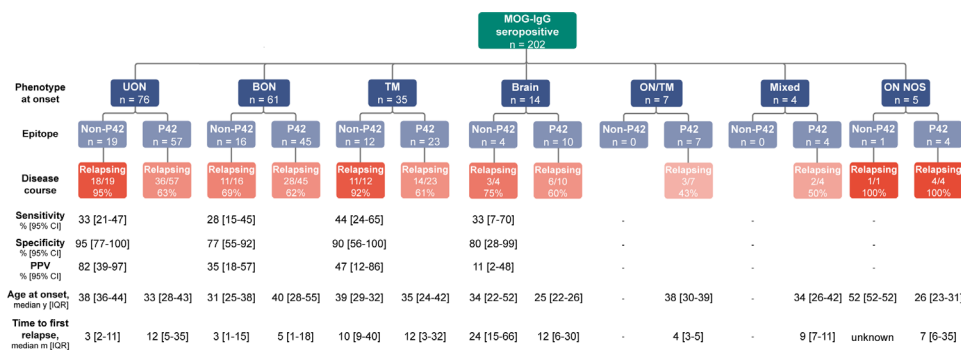


Figure 4 Distribution of non-P42 MOG-IgG in myelin oligodendrocyte glycoprotein antibody-associated disease (MOGAD) at onset. Patients with different MOGAD phenotypes at onset were stratified into their P42 epitope status and subsequently their disease course. Age at onset and time to first relapse are shown (median and IQR). There was no statistical difference between epitope groups for age at onset and time to first relapse. Sensitivity, specificity and PPV could not be determined in some groups due to the absence of patients with MOG-IgG non-P42 epitope in the ON/TM and Mixed groups, and the absence of patients with a monophasic course in the ON (NOS) group. BON, bilateral optic neuritis; NOS, not otherwise specified; PPV, positive predictive value, TM, transverse myelitis; UON, unilateral optic neuritis.

of a minimum of 1 year, explore robust statistical modelling of relapse risk according to two MOG-IgG epitopes within different MOGAD clinical phenotypes and highlights the value of non-P42 MOG-IgG testing for clinical purposes. The association between a non-P42 epitope and a relapsing course was more than two times higher in patients with UON. Specificity and positive predictive value were high and comparable to those of the widely requested oligoclonal band in multiple sclerosis. Hence, the prognostic utility of a non-P42 epitope is highly applicable to adult MOGAD patients as UON is one of the most common presenting syndromes among adults.^{2 11 22 31} In contrast, a non-P42 epitope was not a predictor of a relapsing course among patients with BON although MOG-IgG prevalence is higher in BON.^{2 33} A pathophysiological reason for this divergence is not immediately apparent. One possible explanation for this divergence is that patients with BON, who in the present cohort exhibited higher EDSS and VFSS scores at onset compared with UON patients, may have undergone more aggressive treatment regimens due to the severity of their condition. Indeed, prior studies have demonstrated that steroid treatment for at least 1 month at onset has been associated with a monophasic disease course.³⁴ While detailed therapeutic data were not available for the entirety of this cohort, this would be an important focus for future investigation.

We show here that non-P42 MOG-IgG is highly stable over time, similar to the P42 epitope.²⁷ This enables the use of patient serum collected at onset or remission before a relapse for the prediction of a relapsing course. Although data were limited, epitope stability did not seem to be affected by patient treatment at sample collection, and a specific MOG-IgG epitope was not associated with acute immunotherapy during the first clinical episode or lack thereof. While non-P42 MOG-IgG can predict a short-term relapsing course, it cannot predict when a relapse occurs. Previous studies have found several non-IgG biomarkers of active disease compared with remission. These include sNFL,³⁵ tau,³⁶ TNFAIP3³⁷ and a distinct CSF cytokine profile.^{38 39} A marker that exhibits dynamic levels based on disease activity and is scalable for use in diagnostics would be useful for predicting the timing of a relapse once patients at high risk of a relapsing course are identified with MOG-IgG epitope testing.

A biological explanation for the association between non-P42-targeting MOG-IgG and enhanced likelihood of relapsing disease in MOGAD has not yet been proposed. In Neuromyelitis optica syndrome disorder (NMOSD), AQP4-IgG with a H151/L154 epitope self-assembled into multimeric AQP4-IgG complexes resulting in efficient C1q binding and activation of the pathogenic complement cascade.⁴⁰ This occurred despite low levels of bound IgG. In contrast, AQP4-IgG with a non-H151/L154 epitope required higher levels of IgG binding to trigger C1q binding and activation.⁴⁰ Comparatively, it is possible that non-P42-targeting MOG-IgG can bind to MOG at low titers despite most MOG-IgG having low affinity,^{27 41} ultimately resulting in a relapse attack, whereas P42 epitope-binding MOG-IgG may require greater IgG levels to trigger a relapse.

A limitation of the current study is the lack of information concerning treatment regimen and potential confounding effect of treatment on relapse such as the type of treatment, delay in treatment administration and whether patients were under maintenance therapy. Reduced likelihood of relapses has been observed in patients on prednisolone and/or first-line immunosuppression,^{14 22} and thus the frequency of a relapsing course in the natural history of an untreated patient may have been underestimated as many patients were on active immunotherapy. The cohort included a higher percentage of relapsing MOGAD than

previously reported in other cohorts,^{11 31} potentially due to an underrepresentation of monophasic patients whose follow-up time may be shorter. Furthermore, a non-P42 epitope was present in 26% of the MOGAD cohort, rendering the prognostication valid only for a quarter of the MOGAD population. In contrast, P42-binding MOG-IgG-seropositive patients constituted 74% of the cohort but did not display a preference for either disease course, thereby making this epitope unsuitable for predicting their clinical trajectory. Although the precise binding site of MOG-IgG with a non-P42 and non-H103/S104 epitope and potential additional binding sites outside P42 and H103/S104 for P42-binding sera remains unknown, prospective studies are needed to investigate the risk of relapsing disease among these patients. Further elucidation of the non-P42 epitope could include investigations on the binding to S42, binding to altered structures of MOG induced by the P42S mutation, binding to altered structures of MOG not centred on residue 42, or a combination thereof.

Strengths of this study include high feasibility and the ease of implementation of this prognostic biomarker in serum which is the recommended biospecimen for MOG-IgG testing. Although the lack of binding to H103/S104 together with the lack of binding to P42 showed high risk of a relapsing course, our data demonstrate that specificity and high positive predictive value can be achieved with testing P42 MOG-IgG alone, rather than both P42 and H103/S104, strongly increasing the feasibility of the test for clinical purposes. Although several methodologies are currently reported for the live assay,^{2 25 42} the determination of the non-P42 epitope status can be conducted with various secondary antibody isotypes and without a control cohort after ROC analysis, ensuring high applicability of this diagnostic test in MOG-IgG testing centres globally.

In summary, the identification of non-P42 MOG-IgG presents a significant breakthrough in prognosticating a relapsing disease course in adult patients with MOGAD, especially with UON. To our knowledge, this is the first and only test available that enables early identification of patients at risk of experiencing a relapsing course and may be a valuable tool in the effort to minimise relapse rates, ensure appropriate selection of patients for immunotherapy and mitigate disability in MOGAD.

Author affiliations

- ¹Brain Autoimmunity Group, Kids Neuroscience Centre, Kids Research at the Children's Hospital at Westmead, Sydney, New South Wales, Australia
- ²School of Medical Sciences, Faculty of Medicine and Health, The University of Sydney, Sydney, New South Wales, Australia
- ³Translational Neuroimmunology Group, Kids Neuroscience Centre, Kids Research at the Children's Hospital at Westmead, Sydney, New South Wales, Australia
- ⁴Sydney Medical School, Faculty of Medicine and Health, The University of Sydney, Sydney, New South Wales, Australia
- ⁵Centre for Neuromuscular and Neurological Disorders, Perron Institute for Neurological and Translational Science, The University of Western Australia, Sir Charles Gairdner Hospital, QEII Medical Centre, Nedlands, Western Australia, Australia
- ⁶Centre for Molecular Medicine and Innovative Therapeutics, Murdoch University, Murdoch, Western Australia, Australia
- ⁷Department of Neurology, Monash Health, Clayton, Victoria, Australia
- ⁸Brain and Mind Centre, The University of Sydney, Camperdown, New South Wales, Australia
- ⁹Department of Neurology, Concord Repatriation General Hospital, Sydney, New South Wales, Australia
- ¹⁰Service de Neurologie, Sclérose en Plaques, Pathologies de la Myéline et Neuro Inflammation, and Centre de Référence des Maladies Inflammatoires Rares du Cerveau et de la Moelle, Hôpital Neurologique Pierre Wertheimer and Centre des Neurosciences de Lyon, INSERM 1028 et CNRS UMR5292, Lyon, France
- ¹¹Université Claude Bernard Lyon 1, Lyon, France
- ¹²Multiple Sclerosis and Neuroimmunology Research Groups, Department of Neuroscience, Monash University, Clayton, Victoria, Australia
- ¹³Department of Neurology, John Hunter Hospital, Newcastle, New South Wales, Australia

¹⁴Hunter Medical Research Institute, The University of Newcastle, New Lambton Heights, New South Wales, Australia

¹⁵School of Medicine and Public Health, The University of Newcastle, Callaghan, New South Wales, Australia

¹⁶Institute for Immunology and Infectious Diseases, Murdoch University, Perth, Western Australia, Australia

¹⁷Clinical Outcomes Research Unit (CORE), Department of Medicine, The University of Melbourne, Melbourne, Victoria, Australia

¹⁸Neuroimmunology Centre, Department of Neurology, The Royal Melbourne Hospital, Melbourne, Victoria, Australia

¹⁹School of Medicine and Dentistry, Griffith University, Gold Coast, Queensland, Australia

²⁰Department of Neurology, Gold Coast University Hospital, Southport, Queensland, Australia

²¹Clinical Neuroimmunology Group, Kids Neuroscience Centre, Kids Research at the Children's Hospital at Westmead, Sydney, New South Wales, Australia

Twitter Ganesha Liyanage @Ganesha_Li, Benjamin P Trewin @Benjamin_Trewin, Joseph A Lopez @JAngeloLopez, Romain Marignier @marignierro, Aseel El Hajj @AseelElHajj, Mastura Monif @MasturaMonif, Anneke van der Walt @Anneke_vdw, Russell C Dale @RussellCDale, Sudarshini Ramanathan @darshi_r and Fabienne Brilot @FabienneBrilot

Acknowledgements We thank all the patients and family members who participated in this study. We thank The MOG Project and The Sumaira Foundation for their immense work in patient education and advocacy. We thank Dr Maggie Wang and Dr Suat Dervish for our use of the Flow Cytometry Core Facility of the Westmead Research Hub (Australia) supported by the Cancer Institute New South Wales, the National Health and Medical Research Council, and the Ian Potter Foundation. We thank the Sydney Informatics Hub (The University of Sydney) for their assistance with statistical analyses.

Collaborators The Australasian MOGAD Study Group: Badve Monica, Beadnall Heidi, Blum Stefan, Boggild Mike, Brown David, Bundell Chris, Butzkueven Helmut, Buzzard Katherine, Chu Melissa, Field Deborah, Fraser Clare, Garber Justin, Garrick Raymond, Geevasinga Nimeshan, Hardy Todd, Henderson Andrew, Jeyakumar Niroshan John Nevin, Lawlor Mitchell, Ma Kit Kwan, Matlby Vicki, E Marriot Mark, Massey Jennifer, McCombe Pamela, McDougall Alan, O'Neill John, Paine Mark, Parratt John, Po Kieren, Qiu Jessica, Riminton Sean, Roos Izanne, Shuey Neil, Siriratnam Pakeeran, Sutton Ian, Swaminathan Sanjay, Wang Justine, White Owen, Yiannikas Con.

Contributors FB and GL had full access to all of the data in the study and FB is responsible for the overall content as guarantor. FB and GL contributed to the conception, design of the study and statistical analyses. All authors contributed to acquisition, analysis and interpretation of data. Authors from the Australasian MOGAD Study Group have contributed to acquisition, analysis, and interpretation of data. GL, JAL and FB contributed to drafting the text and preparing the figures. All authors contributed to the critical review of the manuscript for important intellectual content. FB obtained funding and supervised GL.

Funding This work was supported by research and investigators grants from the National Health Medical Research Council (Australia, FB GNT2016841, SR GNT2008339, RCD GNT1193648, AVDW GNT1196380), MS Australia (20-000000025) and Sydney Research Excellence Initiative 2020 (The University of Sydney, Australia), Apollo Grant (The MOG project, USA). GL and BPT receive a postgraduate scholarship from the Australian government (Research Training Program) and the University of Sydney.

Competing interests MF-P has received research grant from MS Australia and travel compensation from Merck. MB reports research grants from Genzyme-Sanofi, Novartis, Biogen, Merck and BMS; and is a Research Consultant for RxMx and Research Director for the Sydney Neuroimaging Analysis Centre. SWR has received funds over the last 5 years including but not limited to travel support, honoraria, trial payments, research and clinical support to the neurology department or academic projects of which he is a member has been received from bodies and charities: NHMRC, NBA, MAA, Lambert Initiative, Beeren foundation, anonymous donors; and from pharmaceutical/biological companies: Alexion, Biogen, CSL, Genzyme, Grifols, Merck, Novartis, Roche, Sanofi. MM has served on scientific and commercial advisory boards for Merck Serono. AvdW has received travel support from Merck Serono, Novartis, Biogen, Roche and Sanofi. She has served on scientific and commercial advisory boards for Merck, Novartis, Sanofi and Roche, and has received unencumbered research grants from Novartis, Biogen, Merck and Roche. JLS has accepted travel compensation from Novartis, Biogen and Merck Serono. Her institution receives the honoraria for talks and advisory board commitment as well as research grants from Bayer Health Care, Biogen, Genzyme Sanofi, Merck, Novartis and TEVA. AGK has in recent times received speaker honoraria and Scientific Advisory Board fees from Bayer, BioCSL, Biogen-Idec, Lgpharma, Merck, Novartis, Roche, Sanofi-Aventis, Sanofi-Genzyme, Teva, NeuroScientific Biopharmaceuticals, Innate Immunotherapeutics, and Mitsubishi Tanabe Pharma. His work has received

grant funding from the Eyewall Foundation, Trish MS Foundation, MS Australia, MS Western Australia, the MS Base Foundation, the National Health and Medical Research Council of Australia, and the National Multiple Sclerosis Society, USA. He is an investigator in clinical trials sponsored by Biogen Idec and Novartis. TK served on scientific advisory boards for BMS, Roche, Janssen, Sanofi Genzyme, Novartis, Merck and Biogen, steering committee for Brain Atrophy Initiative by Sanofi Genzyme, received conference travel support and/or speaker honoraria from WebMD Global, Eisai, Novartis, Biogen, Sanofi-Genzyme, Teva, BioCSL and Merck and received research or educational event support from Biogen, Novartis, Genzyme, Roche, Celgene and Merck. SAB has received honoraria for attendance at advisory boards and travel sponsorship from Bayer-Schering, Biogen-Idec, Merck-Serono, Novartis and Sanofi-Genzyme, has received speakers honoraria from Biogen-Idec and Genzyme, is an investigator in clinical trials sponsored by Biogen Idec, Novartis and Genzyme, and was the recipient of an unencumbered research grant from Biogen-Idec. RCD received research funding from the Petre Foundation and National Health and Medical Research Council (Australia). He has received honoraria from Biogen Idec and Merck Serono as invited speaker. SR received research funding from the National Health and Medical Research Council (Australia), the Royal Australasian College of Physicians, and the University of Sydney. She serves as a consultant on an advisory board for UCB and Limbic Neurology, The MOG Project and the Sumaira Foundation, and has been an invited speaker for Biogen, Excemed, Alexion, Limbic Neurology, and Novartis. FB has received research funding from NSW Health, MS Australia, the National Health Medical Research Council (Australia), the Medical Research Future Fund (Australia) and investigator-initiated research grant from Novartis. She was on an advisory boards for Novartis, Merck and The MOG Project and the Sumaira Foundation, and has been an invited speaker for Biogen, Novartis and Limbic Neurology.

Patient consent for publication Not applicable.

Ethics approval This study involves human participants and was approved by Sydney Children's Hospitals Network Human Research Ethics Committee2019/ETH06041. Participants gave informed consent to participate in the study before taking part.

Provenance and peer review Not commissioned; externally peer reviewed.

Data availability statement Data are available on reasonable request. Deidentified data from the Australasian MOGAD Study Group are available by request through the senior corresponding author. All requests will be reviewed by study leadership, and if approved, data will be transferred subject to an institutional data use agreement. The epitope data are available on reasonable request made to the senior corresponding author. All requests should agree with the Australian legislation on the general data protection regulation and decisions by the Human Ethics Committee of Australia. If approved, data will be transferred subject to a material transfer agreement.

Supplemental material This content has been supplied by the author(s). It has not been vetted by BMJ Publishing Group Limited (BMJ) and may not have been peer-reviewed. Any opinions or recommendations discussed are solely those of the author(s) and are not endorsed by BMJ. BMJ disclaims all liability and responsibility arising from any reliance placed on the content. Where the content includes any translated material, BMJ does not warrant the accuracy and reliability of the translations (including but not limited to local regulations, clinical guidelines, terminology, drug names and drug dosages), and is not responsible for any error and/or omissions arising from translation and adaptation or otherwise.

Open access This is an open access article distributed in accordance with the Creative Commons Attribution 4.0 Unported (CC BY 4.0) license, which permits others to copy, redistribute, remix, transform and build upon this work for any purpose, provided the original work is properly cited, a link to the licence is given, and indication of whether changes were made. See: <https://creativecommons.org/licenses/by/4.0/>.

ORCID iDs

Michael H Barnett <http://orcid.org/0000-0002-2156-8864>
 Stephen W Reddel <http://orcid.org/0000-0002-0169-3350>
 Anneke van der Walt <http://orcid.org/0000-0002-4278-7003>
 Allan G Kermod <http://orcid.org/0000-0002-4476-4016>
 Tomas Kalincik <http://orcid.org/0000-0003-3778-1376>
 Simon A Broadley <http://orcid.org/0000-0002-9429-4307>
 Russell C Dale <http://orcid.org/0000-0002-2495-1826>
 Sudarshini Ramanathan <http://orcid.org/0000-0002-0294-9768>
 Fabienne Brilot <http://orcid.org/0000-0002-7025-2276>

REFERENCES

- 1 Marignier R, Hacohen Y, Cobo-Calvo A, *et al*. Myelin-oligodendrocyte glycoprotein antibody-associated disease. *Lancet Neurol* 2021;20:762–72.

- 2 Banwell B, Bennett JL, Marignier R, *et al.* Diagnosis of myelin oligodendrocyte glycoprotein antibody-associated disease: International MOGAD panel proposed criteria. *Lancet Neurol* 2023;22:268–82.
- 3 Ramanathan S, Dale RC, Brilot F. Anti-MOG antibody: the history, clinical phenotype, and pathogenicity of a serum biomarker for demyelination. *Autoimmun Rev* 2014;15:307–24.
- 4 Reindl M, Waters P. Myelin oligodendrocyte glycoprotein antibodies in neurological disease. *Nat Rev Neurol* 2019;15:89–102.
- 5 Sato DK, Callegaro D, Lana-Peixoto MA, *et al.* Distinction between MOG antibody-positive and Aqp4 antibody-positive NMO spectrum disorders. *Neurology* 2014;82:474–81.
- 6 Dale RC, Tantsis EM, Merheb V, *et al.* Antibodies to MOG have a Demyelination phenotype and affect Oligodendrocyte cytoskeleton. *Neurol Neuroimmunol Neuroinflammation* 2014;1:e12.
- 7 Brilot F, Dale RC, Selter RC, *et al.* Antibodies to native myelin oligodendrocyte glycoprotein in children with inflammatory demyelinating central nervous system disease. *Ann Neurol* 2009;66:833–42.
- 8 Pröbstel A-K, Rudolf G, Dornmair K, *et al.* Anti-MOG antibodies are present in a subgroup of patients with a neuromyelitis optica phenotype. *J Neuroinflammation* 2015;12:46.
- 9 O'Connor KC, McLaughlin KA, De Jager PL, *et al.* Self-antigen tetramers discriminate between myelin autoantibodies to native or denatured protein. *Nat Med* 2007;13:211–7.
- 10 Cobo-Calvo A, Ruiz A, D'Indy H, *et al.* MOG antibody-related disorders: common features and uncommon presentations. *J Neurol* 2017;264:1945–55.
- 11 Jurynczyk M, Messina S, Woodhall MR, *et al.* Clinical presentation and prognosis in MOG-antibody disease: a UK study. *Brain* 2017;140:3128–38.
- 12 Duignan S, Wright S, Rossor T, *et al.* Myelin oligodendrocyte glycoprotein and aquaporin-4 antibodies are highly specific in children with acquired demyelinating syndromes. *Dev Med Child Neurol* 2018;60:958–62.
- 13 Jarius S, Ruprecht K, Kleiter I, *et al.* MOG-IgG in NMO and related disorders: a multicenter study of 50 patients. part 2: epidemiology, clinical presentation, radiological and laboratory features, treatment responses, and long-term outcome. *J Neuroinflammation* 2016;13:280.
- 14 Ramanathan S, Mohammad S, Tantsis E, *et al.* Clinical course, therapeutic responses and outcomes in relapsing MOG antibody-associated demyelination. *J Neurol Neurosurg Psychiatry* 2018;89:127–37.
- 15 Akaishi T, Misu T, Takahashi T, *et al.* Progression pattern of neurological disability with respect to clinical attacks in anti-MOG antibody-associated disorders. *J Neuroimmunol* 2021;351:577467.
- 16 López-Chiriboga AS, Majed M, Fryer J, *et al.* Association of MOG-IgG Serostatus with relapse after acute disseminated encephalomyelitis and proposed diagnostic criteria for MOG-IgG-associated disorders. *JAMA Neurol* 2018;75:1355–63.
- 17 Hyun J-W, Woodhall MR, Kim S-H, *et al.* Longitudinal analysis of myelin oligodendrocyte glycoprotein antibodies in CNS inflammatory diseases. *J Neurol Neurosurg Psychiatry* 2017;88:811–7.
- 18 Armangue T, Olivé-Cirera G, Martínez-Hernández E, *et al.* Associations of paediatric demyelinating and encephalitic syndromes with myelin oligodendrocyte glycoprotein antibodies: a multicentre observational study. *Lancet Neurol* 2020;19:234–46.
- 19 Reindl M, Rostasy K. Serum MOG IgG titres should be performed routinely in the diagnosis and follow-up of MOGAD: Yes. *Mult Scler* 2023;29:926–7.
- 20 Gastaldi M, Foadelli T, Greco G, *et al.* Prognostic relevance of quantitative and longitudinal MOG antibody testing in patients with MOGAD: a multicentre retrospective study. *J Neurol Neurosurg Psychiatry* 2023;94:201–10.
- 21 Chen B, Gomez-Figueroa E, Redenbaugh V, *et al.* Do early relapses predict the risk of long-term relapsing disease in an adult and paediatric cohort with MOGAD. *Ann Neurol* 2023;94:508–17.
- 22 Satukijchai C, Mariano R, Messina S, *et al.* Factors associated with relapse and treatment of myelin oligodendrocyte glycoprotein antibody-associated disease in the United Kingdom. *JAMA Netw Open* 2022;5:e2142780.
- 23 Lopez JA, Houston SD, Tea F, *et al.* Validation of a flow cytometry live cell-based assay to detect myelin oligodendrocyte glycoprotein antibodies for clinical diagnostics. *J Appl Lab Med* 2022;7:12–25.
- 24 Sechi E, Buciuic M, Pittcock SJ, *et al.* Positive predictive value of myelin oligodendrocyte glycoprotein autoantibody testing. *JAMA Neurol* 2021;78:741–6.
- 25 Reindl M, Schanda K, Woodhall M, *et al.* International multicenter examination of MOG antibody assays. *Neurol Neuroimmunol Neuroinflamm* 2020;7:e674.
- 26 Schanda K, Peschl P, Lerch M, *et al.* Differential binding of autoantibodies to MOG Isoforms in inflammatory demyelinating diseases. *Neurol Neuroimmunol Neuroinflamm* 2021;8:e1027.
- 27 Tea F, Lopez JA, Ramanathan S, *et al.* Characterization of the human myelin oligodendrocyte glycoprotein antibody response in demyelination. *Acta Neuropathol Commun* 2019;7:145.
- 28 Mayer MC, Breithaupt C, Reindl M, *et al.* Distinction and temporal stability of conformational epitopes on myelin oligodendrocyte glycoprotein recognized by patients with different inflammatory central nervous system diseases. *J Immunol* 2013;191:3594–604.
- 29 Seok JM, Jeon MY, Chung YH, *et al.* Clinical characteristics of myelin oligodendrocyte glycoprotein antibody-associated disease according to their epitopes. *Front Neurol* 2023;14:1200961.
- 30 Kim Y, Hyun J-W, Woodhall MR, *et al.* Refining cell-based assay to detect MOG-IgG in patients with central nervous system inflammatory diseases. *Mult Scler Relat Disord* 2020;40:101939.
- 31 Cobo-Calvo A, Ruiz A, Maillart E, *et al.* Clinical spectrum and prognostic value of CNS MOG autoimmunity in adults: the MOGADOR study. *Neurology* 2018;90:e1858–69.
- 32 Kaneko K, Sato DK, Nakashima I, *et al.* CSF cytokine profile in MOG-IgG+ neurological disease is similar to Aqp4-IgG+ NMO but distinct from MS: a cross-sectional study and potential therapeutic implications. *J Neurol Neurosurg Psychiatry* 2018;89:927–36.
- 33 Ramanathan S, Reddel SW, Henderson A, *et al.* Antibodies to myelin oligodendrocyte glycoprotein in bilateral and recurrent optic neuritis. *Neurol Neuroimmunol Neuroinflamm* 2014;1:e40.
- 34 Huda S, Whittam D, Jackson R, *et al.* Predictors of relapse in MOG antibody associated disease: a cohort study. *BMJ Open* 2021;11:e055392.
- 35 Luo W, Chen Y, Mao S, *et al.* Serum neurofilament light chain in adult and pediatric patients with myelin oligodendrocyte glycoprotein antibody-associated disease: correlation with relapses and seizures. *J Neurochem* 2022;160:568–77.
- 36 Kim H, Lee E-J, Kim S, *et al.* Serum biomarkers in myelin oligodendrocyte glycoprotein antibody-associated disease. *Neurol Neuroimmunol Neuroinflamm* 2020;7:e708.
- 37 Saxena S, Lokhande H, Gombolay G, *et al.* Identification of TNFAIP3 as relapse biomarker and potential therapeutic target for MOG antibody associated diseases. *Sci Rep* 2020;10:12405.
- 38 Horellou P, de Chalus A, Giorgi L, *et al.* Regulatory T cells increase after Rh-MOG stimulation in non-relapsing but decrease in relapsing MOG antibody-associated disease at onset in children. *Front Immunol* 2021;12:679770.
- 39 Kwon YN, Kim B, Ahn S, *et al.* Serum level of IL-1B in patients with inflammatory demyelinating disease: marked upregulation in the early acute phase of MOG antibody associated disease (MOGAD). *J Neuroimmunol* 2020;348:577361.
- 40 Soltys J, Liu Y, Ritchie A, *et al.* Membrane assembly of aquaporin-4 autoantibodies regulates classical complement activation in neuromyelitis Optica. *J Clin Invest* 2019;129:2000–13.
- 41 Macrini C, Gerhards R, Winklmeier S, *et al.* Features of MOG required for recognition by patients with MOG antibody-associated disorders. *Brain* 2021;144:2375–89.
- 42 Tea F, Pilli D, Ramanathan S, *et al.* Effects of the positive threshold and data analysis on human MOG antibody detection by live flow cytometry. *Front Immunol* 2020;11:119.

Supplementary File**Liyanage *et al.* The MOG antibody non-P42 epitope is predictive of a relapsing course in MOG antibody-associated disease****Supplementary Methods****MOG-IgG Epitope Testing by flow cytometry live cell-based assay**

Serum IgG binding to full-length wild-type human MOG α 1 isoform (MOG WT), MOG P42S and MOG H103A/S104E, and an empty mCherry vector control (CTL) were assessed in the research-based flow cytometry live cell-based assay (CBA) as previously described.¹⁻³ The MOG P42S mutant contained a mutation at position 42, where the Proline substituted for Serine.^{3, 4} The MOG H103A/S104E mutant consisted of full-length human MOG with the histidine and serine at positions 103 and 104 substituted with alanine (103A) and glutamic acid (104E).⁴ Stable cell lines were generated by lentiviral transduction in human embryonic kidney (HEK293) cells as previously described.⁵⁻⁷ MOG WT, MOG P42S and MOG H103A/S104E cell surface expression was controlled in each experiment, were similarly high as described.³ The P42 and H103/S104 MOG-IgG epitope statuses were calculated originally using a control cohort as previously described.³ Briefly, MOG-IgG binding to MOG WT, MOG P42S and MOG H103A/S104E was determined by the delta median fluorescence intensity (Δ MFI): MOG WT, or MOG P42S, or MOG H103A/S104E Δ MFI = MOG MFI – CTL MFI. Epitope status of each patient serum was first calculated using control sera to establish a control reference range by calculating the 3SD above and below the control P42 MOG-IgG or H103/S104 MOG-IgG mean. MOG-IgG were assigned as P42 or H103/S104 MOG-IgG (above mean + 3SD) and non-P42 or non-H103/S104 MOG-IgG (below mean + 3SD). Three independent experiments were repeated, and reported samples remained in the same category in at least two of three independent experiments with low inter-assay variability. Then, to remove the need for a control cohort and facilitate global adoption of the method by diagnostic providers, a receiver-operating-characteristic (ROC) analysis was used to determine optimal thresholds for P42 and MOG H103/S104 MOG-IgG binding (online supplemental figure 1A-D). These thresholds were utilised for calculation of epitopes in this study. Flow cytometry data was acquired on the LSRII flow cytometer (BD Biosciences) and analysed using FlowJo v10 (TreeStar) software and Microsoft Excel.

Supplementary Tables**Supplemental Table 1.** Severity characteristics of MOGAD patients stratified by P42 epitope serostatus.

MOG-IgG Epitope	EDSS median [IQR], n ^a				VFSS median [IQR], n ^a			
	Onset	Last review	P value	Δ EDSS	Onset	Last review	P value	Δ VFSS
P42 and H103/S104	3.0 [2.0-3.5], 45	1.0 [0-2.0], 45	<0.001	2.0	3.0 [2.0-3.50], 37	1.0 [0-2.0], 37	0.001	2.0
P42 and non-H103/S104	3.0 [2.0-4.0], 41	1.0 [0-2.0], 41	<0.001	2.0	3.0 [2.0-4.0], 37	1.0 [0-2.0], 37	<0.001	2.0
Non-P42 and H103/S104	3.0 [2.0-3.8], 19	1.0 [0.5-3.0], 19	0.006	2.0	3.0 [2.8-3.6], 17	2.0 [1.0-3.0], 17	0.004	1.0
Non-P42 and	3.0 [3.0-	2.0 [1.0-	0.021	1.0	3.0 [3.0-	2.0 [1.0-	0.1	1.0

non-H103/S104	4.0], 9	3.0], 9			4.0], 9	3.0], 9		
---------------	---------	---------	--	--	---------	---------	--	--

Abbreviations: EDSS, Expanded Disability Status Scale; VFSS, Visual Functional Systems Score.

^anumber of patients for whom paired data was available.

Supplemental Table 2. Demographic, clinical, and MOG-IgG characteristics of relapsing MOGAD patients stratified by P42 epitope serostatus.

Variable	Total	P42	Non-P42	P value ^a
n	137	93	44	
Age, median y [IQR]	40.53 [31.60-50.75]	39.83 [31.33-51.98]	40.94 [34.41-49.52]	0.989
Sex – male, n (%)	54 (39.4)	36 (38.7)	18 (40.9)	0.853
Follow-up, median y [IQR]	5.33 [2.47-9.60]	5.61 [2.50-9.86]	5.05 [2.28-9.37]	0.365
Time to first relapse, median m [IQR], n ^b	7.03 [3.00-24.63], 113	7.00 [3.08-22.82], 79	8.23 [2.29-26.31], 34	0.684
ARR, median [IQR], n ^b	0.38 [0.19-0.57], 86	0.38 [0.18-0.55], 61	0.38 [0.25-0.62], 25	0.43
Phenotype at onset, n (%)				0.736
UON	54 (39.4)	36 (38.7)	18 (40.9)	
BON	39 (28.5)	28 (30.1)	11 (25.0)	
ON (Unspecified)	5 (3.6)	4 (4.3)	1 (2.3)	
ON/TM	3 (2.2)	3 (3.2)	0 (0.0)	
TM	25 (18.2)	14 (15.1)	11 (25.0)	
Brain	9 (6.6)	6 (6.5)	3 (6.8)	
Mixed	2 (1.5)	2 (2.2)	0 (0.0)	
Phenotype over whole disease course, n (%)				0.602
UON	40 (29.2)	26 (28.0)	14 (31.8)	
BON	9 (6.6)	7 (7.5)	2 (4.5)	
ON (Unspecified)	2 (1.5)	1 (1.1)	1 (2.3)	
ON (mixed)	24 (17.5)	19 (20.4)	5 (11.4)	
ON/TM	19 (13.9)	12 (12.9)	7 (15.9)	
TM	15 (10.9)	8 (8.6)	7 (15.9)	
Brain	4 (2.9)	2 (2.2)	2 (4.5)	
Mixed	24 (17.5)	18 (19.4)	6 (13.6)	
EDSS, median [IQR]				
Onset, n ^b	3.00 [2.00-4.00], 78	3.00 [2.00-4.00], 54	3.00 [2.75-4.00], 24	0.395

Last review, n ^b	1.50 [0.00-3.00], 104	1.50 [0.00-3.00], 73	1.00 [1.00-2.75], 31	0.983
VFSS, median [IQR]				
Onset, n ^b	3.00 [0.50-5.00], 71	3.00 [0.75-5.00], 48	3.00 [0.50-5.00], 23	0.955
Last review, n ^b	1.00 [0.00-2.00], 94	1.00 [0.00-2.00], 66	0.50 [0.00-2.00], 28	0.572
Time from onset to first sample, median m [IQR]	9.81 [0.70, 78.58]	6.68 [0.48, 82.83]	11.34 [0.87, 74.32]	0.726
MOG-IgG titer (clear positive (%) ^c	39 (95.1)	29 (100.0)	10 (83.3)	0.080

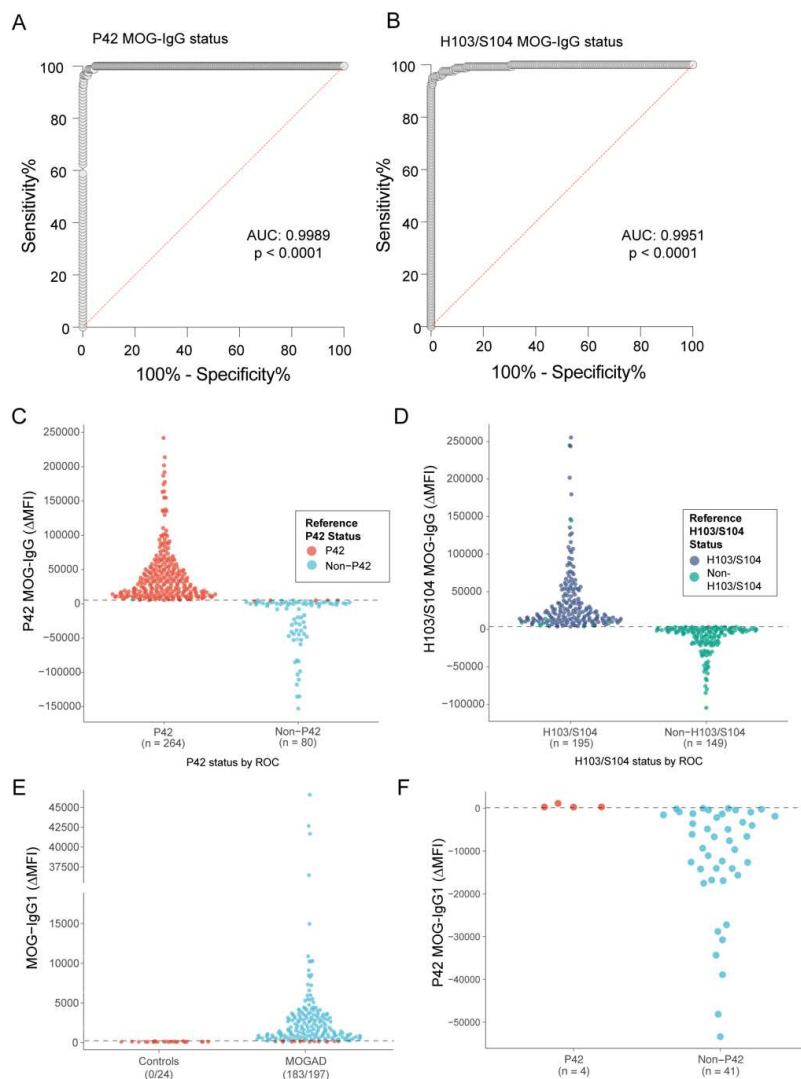
Abbreviations: AAR, annualised rate of relapse; EDSS, Expanded Disability Status Scale; VFSS, Visual Functional Systems Score.

^aP values are computed based on comparisons between patients with P42 MOG-IgG and patients with non-P42 MOG-IgG.

^bnumber of patients with ON, TM, Brain, and Mixed phenotypes for whom the data was available.

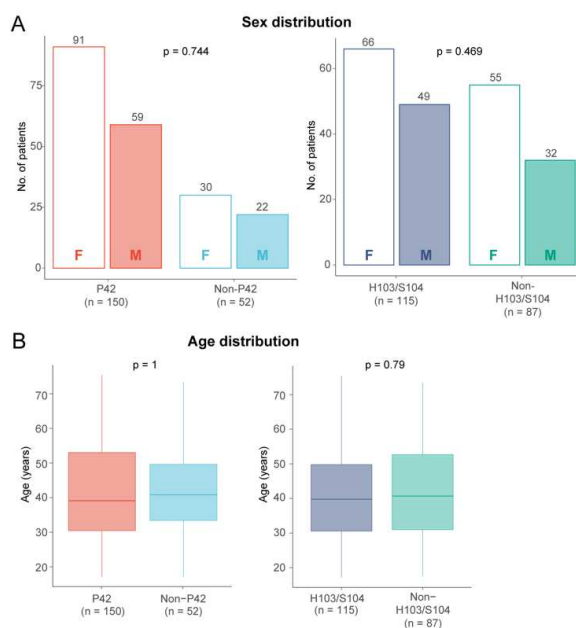
^cMOG-IgG titer was calculated for patient sera collected at onset.

Supplementary figures



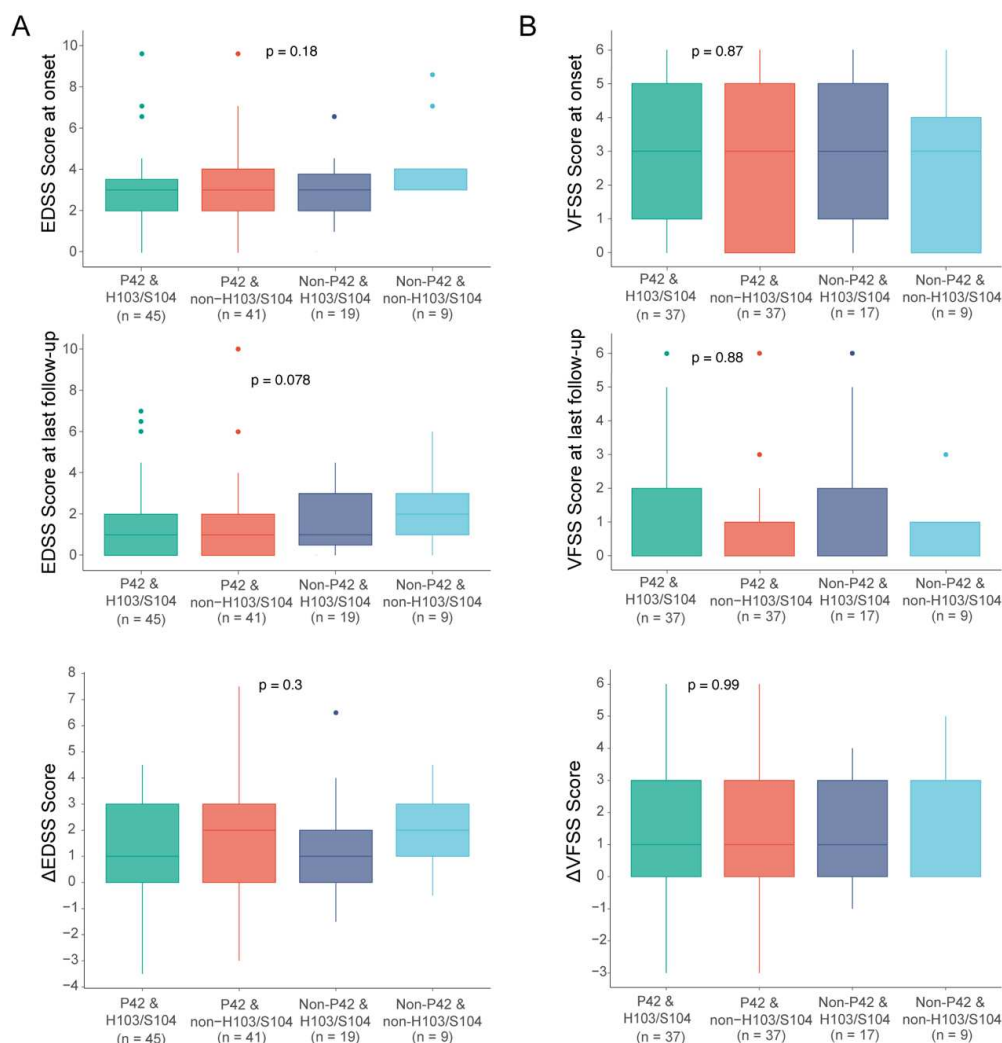
Supplemental figure 1. Applicability of MOG-IgG epitope status determination to other testing centres. Receiver operating characteristic (ROC) curves were generated for P42 MOG-IgG (A) and H103/S104 MOG-IgG (B) epitope status determination to establish optimal binding thresholds that result in high sensitivity and specificity without the use of a control cohort (patients from general medical and non-inflammatory neurological disorder patients, n=24). 344 sera from MOGAD patients (143 without disease course data) were used. P42 and H103/S104 epitope status was concordant in 338/344 (98%) and 334/344 (97%) patients, respectively, compared to when the 24 controls were used. MOG-IgG epitopes, either P42 and non-P42, or H103/S104 and non-H103/S104, could be clearly discriminated (AUC=0.9989, $p < 0.0001$, and AUC=0.9951, $p < 0.0001$). P42 epitope (C) and H103/S104 epitope (D) as determined by ROC-generated optimal thresholds were compared

to the reference epitope status for each patient as determined using a control cohort, and results were highly concordant between analyses methods. (E) The vast majority of patient sera positive for MOG-IgG using a secondary anti-human IgG (H+L) antibody were also positive for MOG-IgG1 using a secondary anti-human IgG1 antibody in a flow cytometry live cell-based assay. (F) Epitope status was determined using a secondary anti-human IgG1 antibody in 45 patient sera that displayed a non-P42 MOG-IgG when using secondary anti-human IgG (H+L) antibody. Most patients (41/45) displayed the same non-P42 epitope when tested with IgG1. Of these 41 patients, 34 (83%) exhibited a relapsing course. Abbreviations: AUC, area under the curve.

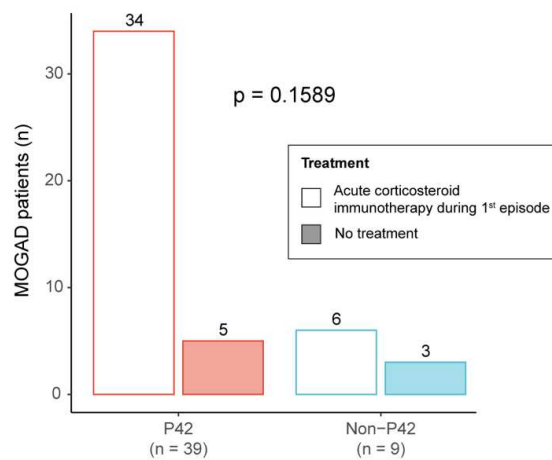


Supplemental figure 2. Patient sex and age distribution across MOG-IgG epitopes.

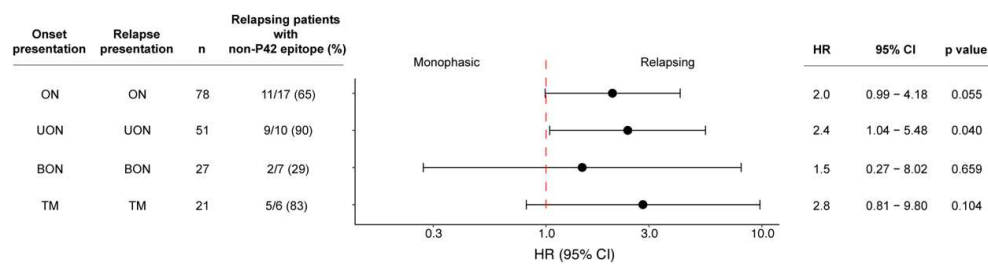
Bar plots showing the number of male and female patients within the MOGAD cohort (n=202) stratified by MOG-IgG P42 (left) and H103/S104 (right) epitope status (A). Box-and-whisker plots showing the distribution of patient ages at the date of sera collection stratified by MOG-IgG P42 (left) and H103/S104 (right) epitope status (B). The time from onset to first sample collection was not different between P42 (median 2.2 months, IQR 0.17 - 40.0) and non-P42 MOG-IgG epitope groups (median 5.7 months, IQR 0.16 - 59.9), $p = 0.278$. Abbreviations: F, female; M, male.



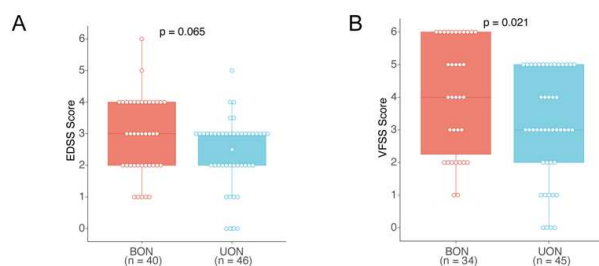
Supplemental figure 3. MOG-IgG epitopes were not associated with severity in MOGAD patients. EDSS (A) and VFSS (B) scores at disease onset (top graphs), last follow-up date (middle graphs), and difference between onset and last follow up date (delta, bottom graphs) were compared between patients who presented with the four combinations of the MOG-IgG epitopes. There was no significant association between severity scores (delta) and epitope groups (Kruskal-Wallis test). Abbreviations: EDSS, Expanded Disability Status Scale; VFSS, Visual Functional Systems Score.



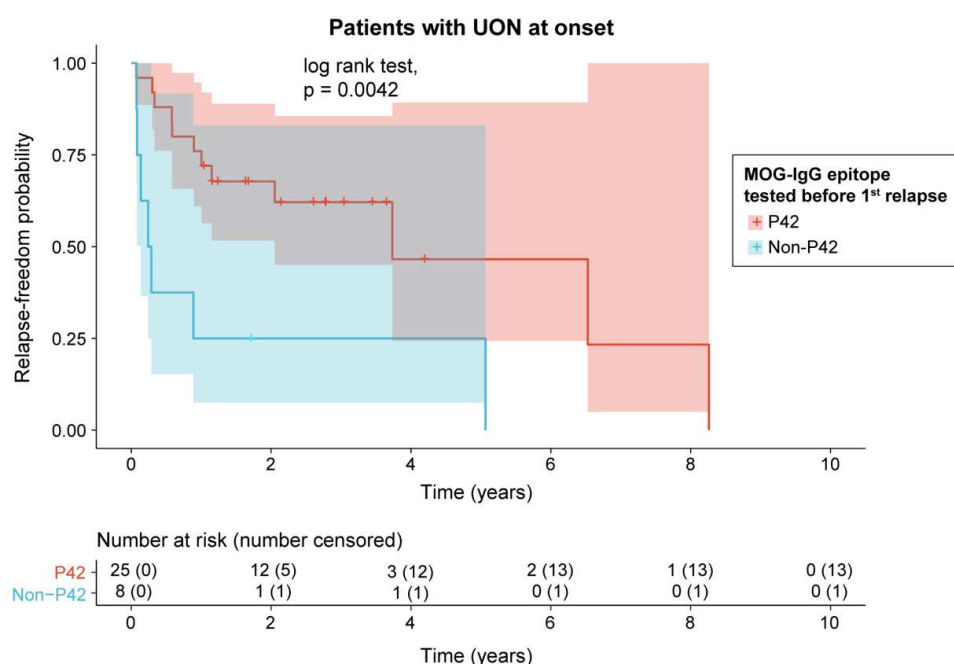
Supplemental figure 4. Treatment during the first clinical episode in patients with P42 and non-P42 MOG-IgG. Administration of acute corticosteroid immunotherapy or lack thereof were compared between patients with P42 MOG-IgG (n=39 total; Treated: n=15 BON, n=8 UON, n=4 ON/TM, n=4 TM, n=2 ON NOS, and n=1 Mixed; Untreated: n=4 UON, and n=1 ON NOS) and non-P42 MOG-IgG (n=9 total; Treated: n=3 BON, n=2 UON, n=1 TM; Untreated: n=1 BON, n=1 UON, and n=1 TM). Acute corticosteroid immunotherapy included intravenous pulsed methylprednisolone and oral corticosteroid taper, or intravenous pulsed methylprednisolone only. There was no significant association between acute corticosteroid immunotherapy during the first clinical episode and the two epitope groups (Chi-square and Fisher's exact Test). Abbreviations: T, treated; U, untreated.



Supplemental figure 5. Non-P42 MOG-IgG was the strongest predictor of a relapsing course in patients with UON at onset. Univariate Cox Proportional Hazard Model showing the risk of a relapsing course in patients with non-42 MOG-IgG and the same clinical phenotype throughout the course of their MOGAD disease. Reference groups were patients with P42 MOG-IgG with the same clinical phenotype throughout MOGAD course. Abbreviations: BON, bilateral optic neuritis; ON, optic neuritis; UON, unilateral optic neuritis; TM, transverse myelitis.



Supplemental figure 6. Patients with BON had higher disease severity scores at onset. Measures of disease severity according to EDSS (A) and VFSS scores (B) were compared between patients who presented with BON at onset and those with UON at onset. Among patients with a known VFSS score, follow-up time (BON: median 3.3 years (IQR 1.7-5.1), UON: median 3.5 years (IQR 2.2-6.2)), the proportion of relapsing patients (BON: 68%, UON: 67%), and their time to first relapse (BON (n=22): median 4.1 months (IQR 1.4 – 13.8); UON (n=28): median 7.0 months (IQR 3.3 – 15.0); $p=0.13$) were not different. Abbreviations: BON, bilateral optic neuritis; EDSS, Expanded Disability Status Scale; UON, unilateral optic neuritis; VFSS, Visual Functional Systems Scores.



Supplemental figure 7. Relapse-freedom in patients with UON at onset and non-P42 MOG-IgG detected prior the first relapse was significantly shorter than those with P42 MOG-IgG. Kaplan-Meier curve showing the relapse-freedom period of patients presenting with UON at onset with P42 MOG-IgG compared to a non-P42 MOG-IgG (number of censored observations and number at risk are shown below the curve). 95% CI are shown in

shaded areas on both sides of the survival curves. Abbreviations: UON, unilateral optic neuritis.

Supplementary References

1. Lopez JA, Houston SD, Tea F, et al. Validation of a Flow Cytometry Live Cell-Based Assay to Detect Myelin Oligodendrocyte Glycoprotein Antibodies for Clinical Diagnostics. *J Appl Lab Med* 2022;7:12-25.
2. Reindl M, Schanda K, Woodhall M, et al. International multicenter examination of MOG antibody assays. *Neurology - Neuroimmunology Neuroinflammation* 2020;7:e674.
3. Tea F, Lopez JA, Ramanathan S, et al. Characterization of the human myelin oligodendrocyte glycoprotein antibody response in demyelination. *Acta neuropathologica communications* 2019;7.
4. Mayer MC, Breithaupt C, Reindl M, et al. Distinction and Temporal Stability of Conformational Epitopes on Myelin Oligodendrocyte Glycoprotein Recognized by Patients with Different Inflammatory Central Nervous System Diseases. *The Journal of Immunology* 2013;191:3594-3604.
5. Dale RC, Tantsis EM, Merheb V, et al. Antibodies to MOG have a demyelination phenotype and affect oligodendrocyte cytoskeleton. *Neurology - Neuroimmunology Neuroinflammation* 2014;1:e12.
6. Menge T, Lalive PH, von Büdingen HC, Genain CP. Conformational epitopes of myelin oligodendrocyte glycoprotein are targets of potentially pathogenic antibody responses in multiple sclerosis. *J Neuroinflammation* 2011;8:161.
7. Ramanathan S, Reddel SW, Henderson A, et al. Antibodies to myelin oligodendrocyte glycoprotein in bilateral and recurrent optic neuritis. *Neurology - Neuroimmunology Neuroinflammation* 2014;1:e40.